

# PLAP antibody

Catalog Number: 113939

## Product name

PLAP antibody

IP: 1:200-1:2000

IHC: 1:20-1:200

## Specificity

Human, Mouse; other species not tested.

## Antibody description

PLAP Rabbit Polyclonal antibody. Positive IP detected in HepG2 cells. Positive WB detected in human placenta tissue, HepG2 cells, mouse liver tissue. Positive IHC detected in human placenta tissue, human ovary tumor tissue. Observed molecular weight by Western-blot: 66 kDa

## Preparation

This antibody was obtained by immunization of PLAP recombinant protein (Accession Number: NM\_001632). Purification method: Antigen affinity purified.

## Formulation

PBS with 0.02% sodium azide and 50% glycerol pH 7.3.

## Storage

Store at -20°C. DO NOT ALIQUOT

## Clonality

Polyclonal

## Ig Type

Rabbit IgG

## Applications

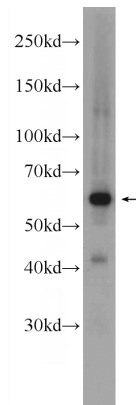
ELISA, IHC, WB, IP


## Dilutions

Recommended Dilution:

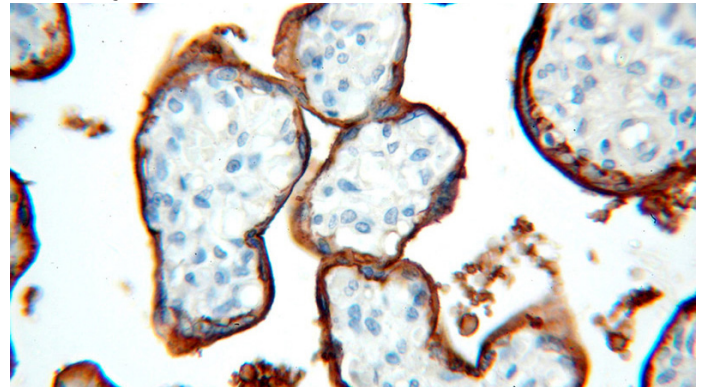
WB: 1:200-1:2000

## Validations



human placenta tissue were subjected to SDS PAGE followed by western blot with Catalog No:113939(ALPP Antibody) at dilution of 1:600 

Immunohistochemical of paraffin-embedded human placenta using Catalog No:113939(ALPP antibody) at dilution of 1:100 (under 10x lens)

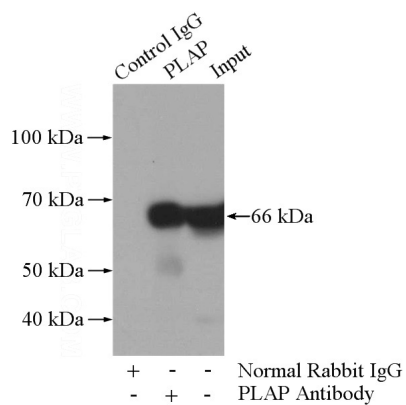


Immunohistochemical of paraffin-embedded human placenta using Catalog No:113939(ALPP antibody) at dilution of 1:100 (under 40x lens)

# PLAP antibody

Catalog Number: 113939

---



IP Result of anti-ALPP (IP:Catalog No:113939, 4ug; Detection:Catalog No:113939 1:700) with HepG2 cells lysate 1800ug.