

MYL1 antibody



Catalog Number: 112939

Product name

MYL1 antibody

Specificity

Human, Mouse, Rat; other species not tested.

Antibody description

MYL1 Rabbit Polyclonal antibody. Positive WB detected in human skeletal muscle tissue, human heart tissue, mouse heart tissue, mouse skeletal muscle tissue, mouse skin tissue. Observed molecular weight by Western-blot: 14-17 kDa, 22-25 kDa

Preparation

This antibody was obtained by immunization of MYL1 recombinant protein (Accession Number: NM_079422). Purification method: Antigen affinity purified.

Formulation

PBS with 0.02% sodium azide and 50% glycerol pH 7.3.

Storage

Store at -20°C. DO NOT ALIQUOT

Clonality

Polyclonal

Ig Type

Rabbit IgG

Applications

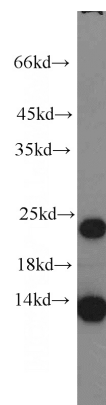
ELISA, WB

Dilutions

Recommended Dilution:

WB: 1:1000-1:10000

Validations



human skeletal muscle tissue were subjected to SDS PAGE followed by western blot with Catalog No:112939(MYL1 antibody) at dilution of 1:2000