

# Anti-PSMA3 antibody



Catalog Number: 142939

## Product name

Anti-PSMA3 antibody

## Immunogen

[Human PSMA3 / Proteasome 20S alpha 3 \(His Tag\) recombinant protein](#)

## Specificity

Human PSMA3 / Proteasome 20S alpha 3

## Antibody description

Rabbit Polyclonal to Human PSMA3

## Preparation

Produced in rabbits immunized with purified, recombinant Human PSMA3 / Proteasome 20S alpha 3 . PSMA3 / Proteasome 20S alpha 3 specific IgG was purified by Human PSMA3 / Proteasome 20S alpha 3 affinity chromatography.

## Formulation

0.2  $\mu$ m filtered solution in PBS

## Storage

This antibody can be stored at 2°C-8°C for one month without detectable loss of activity. Antibody products are stable for twelve months from date of receipt when stored at -20°C to -80°C. Preservative-Free.

Sodium azide is recommended to avoid contamination (final concentration 0.05%-0.1%). It is toxic to cells and should be disposed of properly. Avoid repeated freeze-thaw cycles.

## Clonality

Polyclonal

## Ig Type

Rabbit IgG

## Applications

WB, ELISA, ICC/IF, IF, IP

## Dilutions

WB: 5-20  $\mu$ g/ml

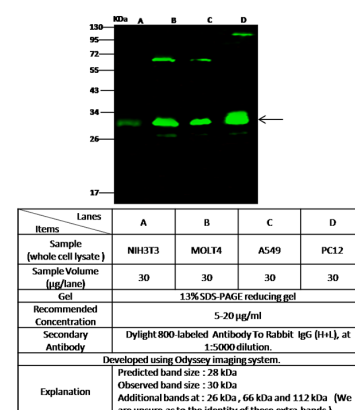
ELISA: 0.1-0.2  $\mu$ g/mL

This antibody can be used at 0.1-0.2  $\mu$ g/mL with the appropriate secondary reagents to detect Human PSMA3 / Proteasome 20S alpha 3.

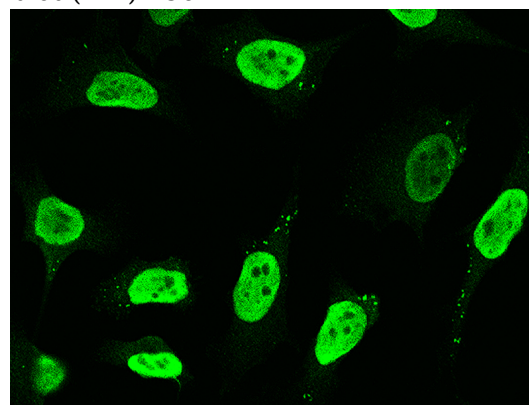
ICC/IF: 0.5-3 $\mu$ g/mL

IP: 1-4  $\mu$ l/mg of lysate

## Validations



Human PSMA3 / Proteasome 20S alpha 3 Western blot (WB) 15671

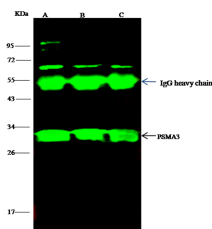


Human PSMA3 / Proteasome 20S alpha 3 Immunofluorescence(IF) 15672

# Anti-PSMA3 antibody



Catalog Number: 142939



Human PSMA3 / Proteasome 20S alpha 3  
Immunoprecipitation(IP) 15673

Lanes	A	B	C
Sample (whole cell lysate)	Molt-4	NIH-3T3	A549
Sample quantity	0.5 mg		
IP antibody quantity	4 uL		
Protein G agarose	15 uL of 50% Protein G Agarose		
Gel	13% SDS-PAGE reducing gel		
Primary antibody	His-35C-PSMA3 antibody at 10 ug/ml		
Secondary antibody	Dylight 800-labeled antibody to rabbit IgG (H+L), at 1:5000 dilution		