

ISG20L2 antibody



Catalog Number: 111939

Product name

ISG20L2 antibody

IP: 1:500-1:5000

IF: 1:20-1:200

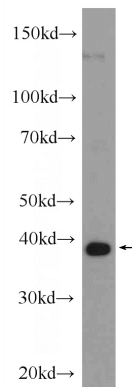
Specificity

Human; other species not tested.

Validations

Antibody description

ISG20L2 Rabbit Polyclonal antibody. Positive IF detected in HEK-293 cells. Positive IP detected in HEK-293 cells. Positive WB detected in HEK-293 cells. Observed molecular weight by Western-blot: 40 kDa



Preparation

This antibody was obtained by immunization of ISG20L2 recombinant protein (Accession Number: XM_006711561). Purification method: Antigen affinity purified.

HEK-293 cells were subjected to SDS PAGE followed by western blot with Catalog No:111939(ISG20L2 Antibody) at dilution of

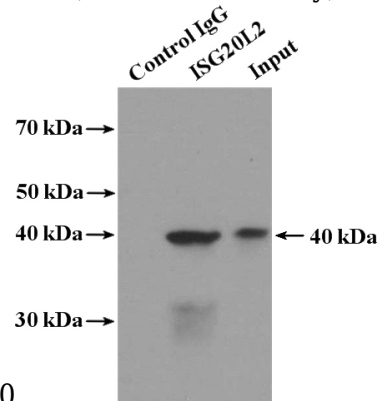
Formulation

PBS with 0.1% sodium azide and 50% glycerol pH 7.3.

1:1000

Storage

Store at -20°C. DO NOT ALIQUOT



1:1000

Clonality

Polyclonal

IP Result of anti-ISG20L2 (IP:Catalog No:111939, 4ug; Detection:Catalog No:111939 1:1000) with HEK-293 cells lysate 3240ug.

Ig Type

Rabbit IgG

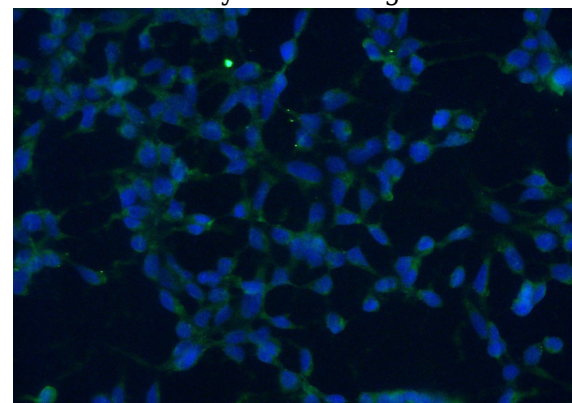
Applications

ELISA, WB, IF, IP

Dilutions

Recommended Dilution:

WB: 1:500-1:5000



Immunofluorescent analysis of (-20oc Ethanol)

ISG20L2 antibody



Catalog Number: 111939

fixed HEK-293 cells using Catalog
No:111939(ISG20L2 Antibody) at dilution of 1:50

and Alexa Fluor 488-conjugated AffiniPure Goat
Anti-Rabbit IgG(H+L)