

Anti-UBE2M antibody



Catalog Number: 100939

Product name

Anti-UBE2M antibody

Specificity

Human UBE2M

Antibody description

Rabbit polyclonal to UBE2M

Preparation

Produced in rabbits immunized with a synthetic peptide corresponding to the center region of the Human UBE2M, and purified by antigen affinity chromatography.

Formulation

0.2 µm filtered solution in PBS

Storage

This antibody can be stored at 2°C-8°C for one month without detectable loss of activity. Antibody products are stable for twelve months from date of receipt when stored at -20°C to -80°C.

Preservative-Free.

Sodium azide is recommended to avoid contamination (final concentration 0.05%-0.1%). It is toxic to cells and should be disposed of properly. Avoid repeated freeze-thaw cycles.

Clonality

Polyclonal

Ig Type

Rabbit IgG

Applications

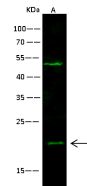
WB, IP

Dilutions

WB: 10-20 µg/ml

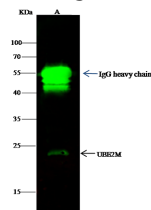
IP: 1-4 uL/mg of lysate

Validations



Lanes	A
Items	
Sample (whole cell lysate)	Jurkat
Sample Volume (µg/lane)	30
Gel	13% SDS-PAGE reducing gel
Recommended concentration	10-20 µg/ml
Secondary Antibody	Dylight 800-labeled Antibody to Rabbit IgG (1:1), at 1:5000 dilution
Developed using Odyssey imaging system.	
Explanation	Predicted band size : 21 kDa Observed band size : 21 kDa Additional bands at : 50 kDa (We are unsure as to the identity of these extra bands.)

UBE2M Antibody, Rabbit PAb, Antigen Affinity



Lanes	A
Items	
Sample (whole cell lysate)	Jurkat
Sample quantity	0.5 mg
IP antibody quantity	2 µg
Immuno-magnetic beads Protein G	60 µg
Gel	13% SDS-PAGE reducing gel
Primary antibody	KL11-SMCC-sinoA1017 antibody at 10 µg/ml
Secondary antibody	Dylight 800-labeled antibody to rabbit IgG (1:1), at 1:5000 dilution

Purified, Western blot

UBE2M Antibody, Rabbit PAb, Antigen Affinity

Purified, Immunoprecipitation