

BTD antibody

Catalog Number: 108539

Product name

BTD antibody

IHC: 1:20-1:200

IF: 1:20-1:200

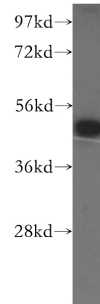
Specificity

Human, Mouse, Rat; other species not tested.

Antibody description

BTD Rabbit Polyclonal antibody. Positive IF detected in HeLa cells. Positive IHC detected in human placenta tissue. Positive WB detected in HeLa cells, human brain tissue. Observed molecular weight by Western-blot: 48 kDa

Validations



Preparation

This antibody was obtained by immunization of BTD recombinant protein (Accession Number: NM_000060). Purification method: Antigen affinity purified.

HeLa cells were subjected to SDS PAGE followed by western blot with Catalog No:108539(BTD antibody) at dilution of 1:500

Formulation

PBS with 0.02% sodium azide and 50% glycerol pH 7.3.

Storage

Store at -20°C. DO NOT ALIQUOT

Clonality

Polyclonal

Ig Type

Rabbit IgG

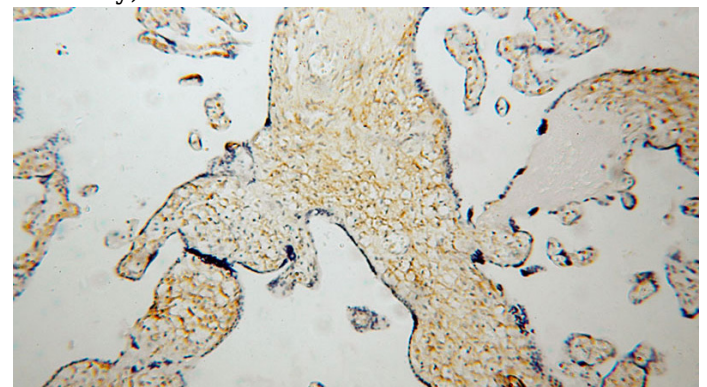
Applications

ELISA, WB, IHC, IF

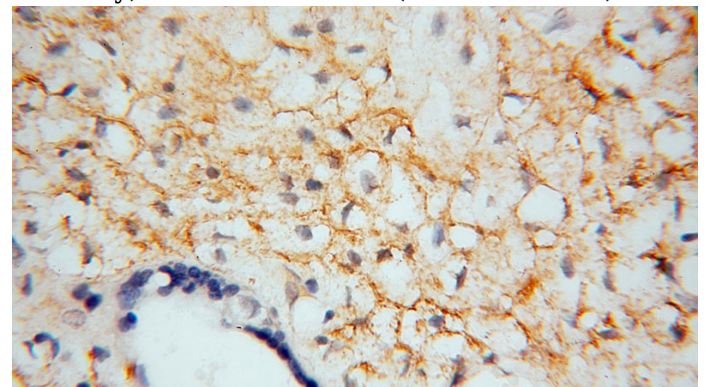
Dilutions

Recommended Dilution:

WB: 1:500-1:5000



Immunohistochemical of paraffin-embedded human placenta using Catalog No:108539(BTD antibody) at dilution of 1:50 (under 10x lens)

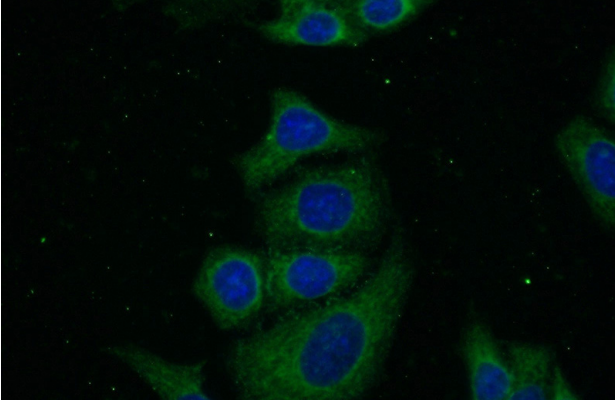


Immunohistochemical of paraffin-embedded human placenta using Catalog No:108539(BTD antibody) at dilution of 1:50 (under 10x lens)

BTD antibody

Catalog Number: 108539

antibody) at dilution of 1:50 (under 40x lens)



Immunofluorescent analysis of (-20oc Ethanol) fixed HeLa cells using Catalog No:108539(BTD Antibody) at dilution of 1:50 and Alexa Fluor 488-conjugated AffiniPure Goat Anti-Rabbit IgG(H+L)