

Anti-xCT Rabbit antibody



Catalog Number: 167539

Product name

Anti-xCT Rabbit antibody

Ig Type

Rabbit IgG

Specificity

Human, Mouse

Applications

WB, IP

Antibody description

xCT Rabbit polyclonal antibody

Dilutions

WB: 1/1000-1/5000

Preparation

Antigen: A synthetic peptide of human xCT

IP: 1/20

Formulation

Supplied in 50nM Tris-Glycine(pH 7.4), 0.15M NaCl, 40%Glycerol, 0.01% sodium azide and 0.05% BSA.

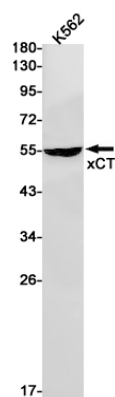
Storage

Store at -20°C. Stable for 12 months from date of receipt.

Clonality

Polyclonal

Validations



Western blot detection of xCT in K562 cell lysates using xCT Rabbit pAb(1:1000 diluted). Predicted band size: 55kDa. Observed band size: 55kDa.