

# Anetumab reference antibody



Catalog Number: 177139

## Product name

Anetumab reference antibody

## Specificity

Human Mesothelin

## Antibody description

Anti-Mesothelin Antibody (Anetumab)

## Preparation

Recombinant expression and purified from CHO cells.

## Formulation

0.1 M Pro-Ac, 20 mM Arg, pH 5.0

## Storage

-80°C for 2 years under sterile conditions; -20°C for 1 year under sterile conditions; Avoid repeated freeze-thaw cycles.

## Clonality

Monoclonal

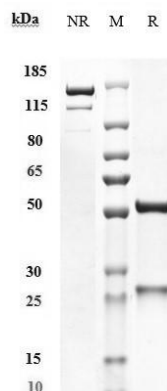
## Ig Type

IgG1

## Applications

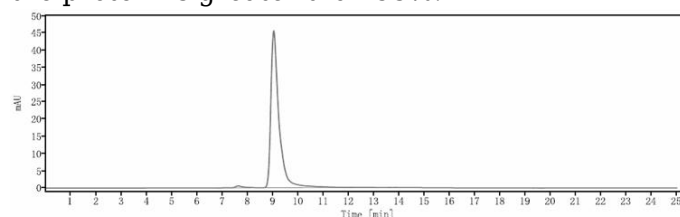
ELISA

## Validations



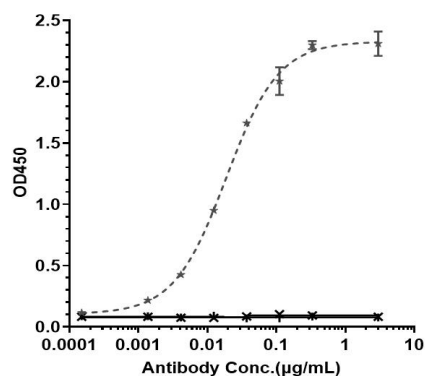
## SDS-PAGE

Anti-Mesothelin Antibody (anetumab) on SDS-PAGE under reducing (R) condition. The purity of the protein is greater than 95%.



## SEC-HPLC

The purity of Anti-Mesothelin Antibody (anetumab) is 98.58%, determined by SEC-HPLC.



Bioactivity: ELISA

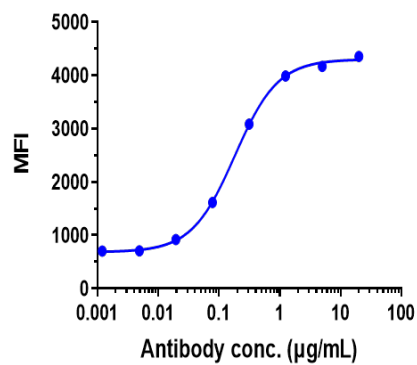
Immobilized human Mesothelin His at 2 µg/mL can bind Anti-Mesothelin Antibody (anetumab),  $EC_{50}=0.01877$  µg/mL.

# Anetumab reference antibody



Catalog Number: 177139

---



Bioactivity: FACS

ASPC-1 cells were stained with Anti-Mesothelin Antibody (anetumab) and negative control protein respectively, washed and then followed by PE and analyzed with FACS,  $EC_{50}=0.1822 \text{ ug/mL}$ .