

# Anti-EzrinRabbit antibody



Catalog Number: 167139

## Product name

Anti-EzrinRabbit antibody

## Specificity

Human, Mouse, Rat

## Antibody description

EzrinRabbit polyclonal antibody

## Preparation

Antigen: Peptide sequence around aa. 565~569 (Y-K-T-L-R) derived from Human Ezrin.

## Formulation

Supplied at 1.0mg/mL in phosphate buffered saline (without Mg<sup>2+</sup> and Ca<sup>2+</sup>), pH 7.4, 150mM NaCl, 0.02% sodium azide and 50% glycerol.

## Storage

Store at 4°C short term. Store at -20°C long term. Avoid freeze / thaw cycle.

## Clonality

Polyclonal

## Ig Type

Rabbit IgG

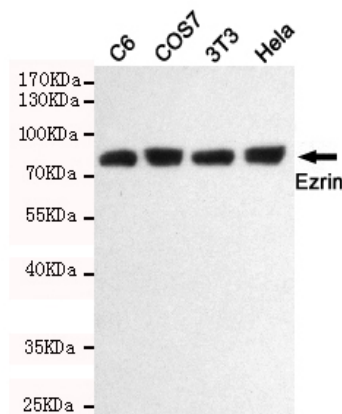
## Applications

WB

## Dilutions

WB:1/1000

## Validations



Western blot detection of Ezrin (Ab-567) in HeLa, C6, 3T3 and COS7 cell lysates using Ezrin (Ab-567) rabbit pAb (1:1000 diluted). Predicted band size: 81KDa. Observed band size: 81KDa.