

# DYRK2 Polyclonal Antibody



Catalog Number: 165139

## Product name

DYRK2 Polyclonal Antibody

WB 1:500 - 1:1000

IHC 1:50 - 1:100

IF 1:20 - 1:100

## Specificity

Human, Mouse, Rat

## Antibody description

Polyclonal antibody to DYRK2

## Preparation

Antigen: Recombinant fusion protein containing a sequence corresponding to amino acids 429-528 of human DYRK2 (NP\_003574.1).

## Formulation

PBS with 0.02% sodium azide, 50% glycerol, pH7.3.

## Storage

Store at -20°C. Avoid freeze / thaw cycles.

## Clonality

Polyclonal

## Ig Type

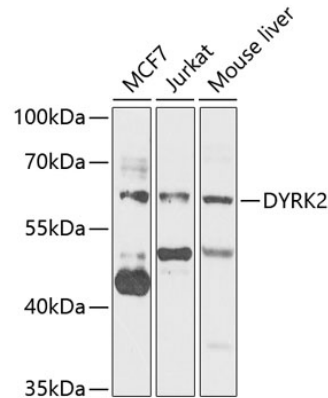
Rabbit IgG

## Applications

WB, IHC, IF

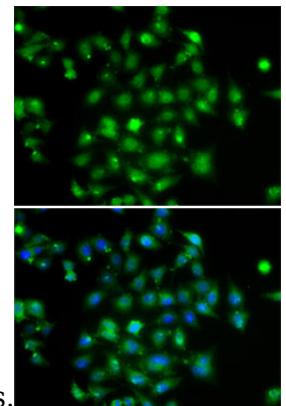
## Dilutions

## Validations



Western blot - DYRK2 Polyclonal Antibody

Western blot analysis of extracts of various cell lines, using DYRK2 antibody at 1:1000 dilution. Secondary antibody: HRP Goat Anti-Rabbit IgG (H+L) at 1:10000 dilution. Lysates/proteins: 25ug per lane. Blocking buffer: 3% nonfat dry milk in TBST. Detection: ECL



Basic Kit .Exposure time: 5s.

Immunofluorescence - DYRK2 Polyclonal Antibody

Immunofluorescence analysis of A-549 cells using DYRK2 antibody . Blue: DAPI for nuclear staining.