

# GPRC5A,RAI3 antibody

Catalog Number: 111139

## Product name

GPRC5A,RAI3 antibody

## Specificity

Human; other species not tested.

## Antibody description

GPRC5A,RAI3 Rabbit Polyclonal antibody. Positive WB detected in Transfected HEK-293 cells. Positive IHC detected in human lung cancer tissue, human breast cancer tissue. Positive FC detected in MCF-7 cells.

## Preparation

This antibody was obtained by immunization of GPRC5A,RAI3 recombinant protein (Accession Number: NM\_003979). Purification method: Antigen affinity purified.

## Formulation

PBS with 0.1% sodium azide and 50% glycerol pH 7.3.

## Storage

Store at -20°C. DO NOT ALIQUOT

## Clonality

Polyclonal

## Ig Type

Rabbit IgG

## Applications

ELISA, WB, IHC, FC

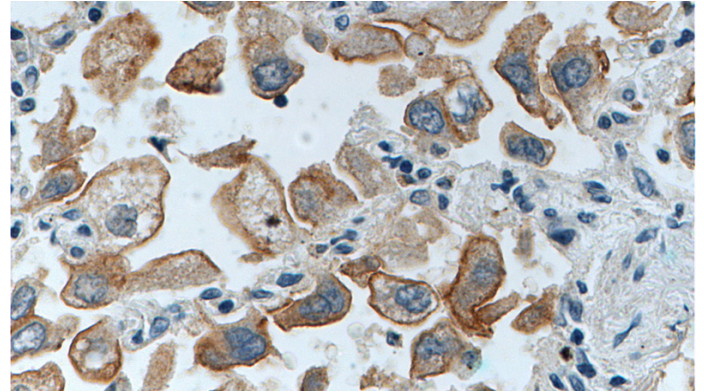
## Dilutions

Recommended Dilution:

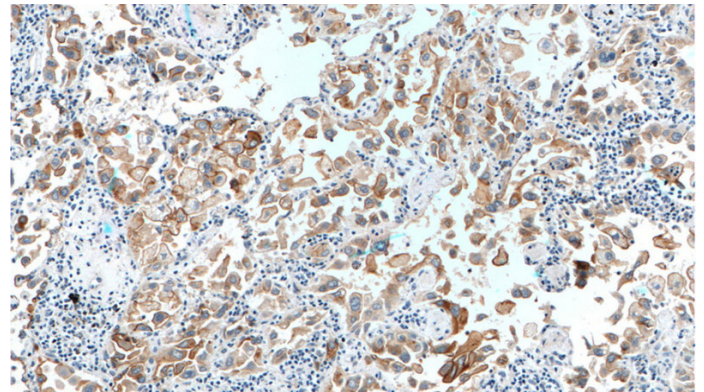
WB: 1:200-1:2000

IHC: 1:50-1:500

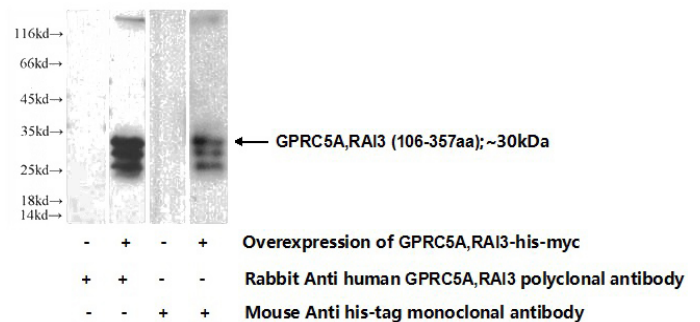
## Validations



Immunohistochemistry of paraffin-embedded human lung cancer tissue slide using Catalog No:111139(GPRC5A,RAI3 Antibody) at dilution of 1:200 (under 40x lens).



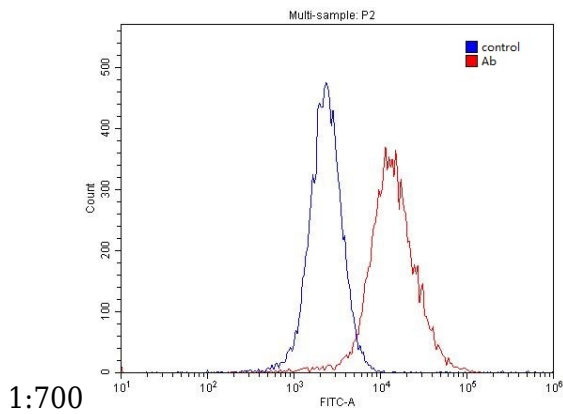
Immunohistochemistry of paraffin-embedded human lung cancer tissue slide using Catalog No:111139(GPRC5A,RAI3 Antibody) at dilution of 1:200 (under 10x lens).



Transfected HEK-293 cells were subjected to SDS PAGE followed by western blot with Catalog No:111139(GPRC5A,RAI3 Antibody) at dilution of

# GPRC5A,RAI3 antibody

Catalog Number: 111139



1X10<sup>6</sup> MCF-7 cells were stained with 0.2ug GPRC5A,RAI3 antibody (Catalog No:111139, red) and control antibody (blue). Fixed with 4% PFA blocked with 3% BSA (30 min). Alexa Fluor 488-conjugated AffiniPure Goat Anti-Rabbit IgG(H+L) with dilution 1:1500.