

CAPRIN1 antibody



Catalog Number: 108839

Product name

CAPRIN1 antibody

Specificity

Human, Mouse, Rat; other species not tested.

Antibody description

CAPRIN1 Rabbit Polyclonal antibody. Positive IF detected in HepG2 cells, c°Chlear cryosections, HeLa cells, °C2 cells. Positive IHC detected in human breast cancer tissue, human testis tissue. Positive WB detected in HeLa and ND7 cells, HeLa cells, human brain tissue, human skeletal muscle tissue, human testis tissue, Jurkat cells, mouse brain tissue, mouse kidney tissue, mouse spleen tissue, SH-SY5Y cells. Positive IP detected in HeLa cells. Observed molecular weight by Western-blot: 116kd

Preparation

This antibody was obtained by immunization of CAPRIN1 recombinant protein (Accession Number: XM_017017749). Purification method: Antigen affinity purified.

Formulation

PBS with 0.02% sodium azide and 50% glycerol pH 7.3.

Storage

Store at -20°C. DO NOT ALIQUOT

Clonality

Polyclonal

Ig Type

Rabbit IgG

Applications

ELISA, IHC, IP, WB, IF

Dilutions

Recommended Dilution:

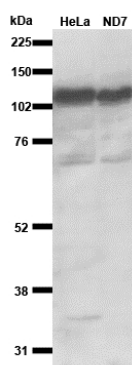
WB: 1:200-1:2000

IP: 1:200-1:1000

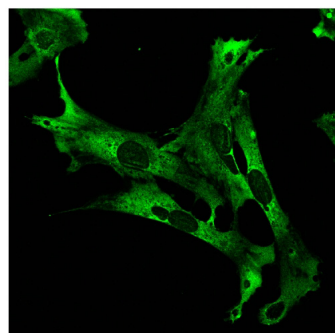
IHC: 1:20-1:200

IF: 1:10-1:100

Validations



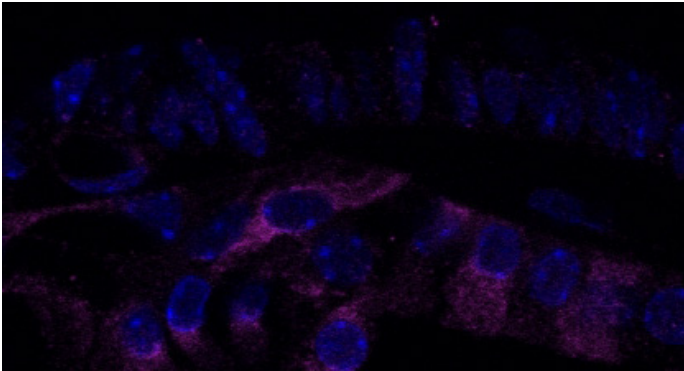
WB result of anti-CAPRIN1 (Catalog No:108839, 1:800) with HeLa and ND7 cells by Emily Towers.



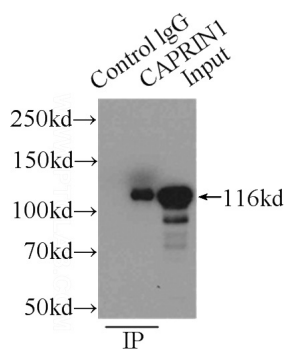
IF result of anti-CAPRIN1 (Catalog No:108839, 1:200) with oc2 cells by Dr. Emily Towers.

CAPRIN1 antibody

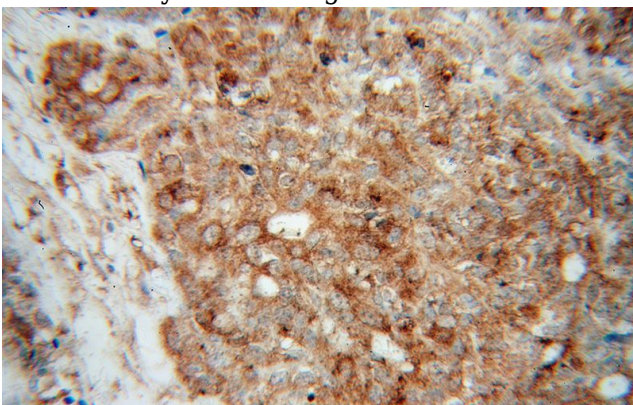
Catalog Number: 108839



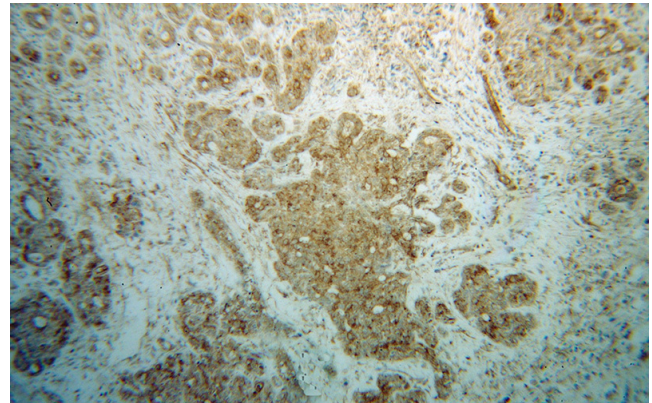
IF result of anti-CAPRIN1(Catalog No:108839, 1:200) with Cochlear cryosections by Dr. Emily Towers. CAPRIN1, purple; DAPI, blue.



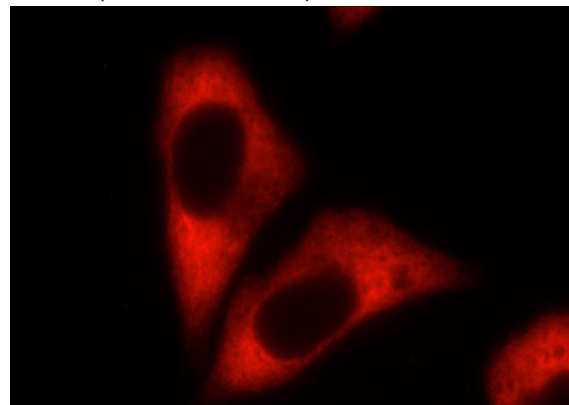
IP Result of anti-CAPRIN1 (IP:Catalog No:108839, 3ug; Detection:Catalog No:108839 1:300) with HeLa cells lysate 2500ug.



Immunohistochemical of paraffin-embedded human breast cancer using Catalog No:108839(CAPRIN1 antibody) at dilution of 1:100 (under 40x lens)



Immunohistochemical of paraffin-embedded human breast cancer using Catalog No:108839(CAPRIN1 antibody) at dilution of 1:100 (under 10x lens)



Immunofluorescent analysis of HepG2 cells using Catalog No:108839(CAPRIN1 Antibody) at dilution of 1:25 and Rhodamine-Goat anti-Rabbit IgG