

Anti-Serine racemase Rabbit antibody



Catalog Number: 167839

Product name

Rabbit IgG

Anti-Serine racemase Rabbit antibody

Applications

Specificity

WB, ICC/IF, IP

Human

Dilutions

Antibody description

WB: 1/1000

Serine racemase Rabbit monoclonal antibody

ICC/IF: 1/100

Preparation

IP: 1/20

Antigen: A synthetic peptide of human Serine racemase

Validations

Formulation

50nM Tris-Glycine(pH 7.4), 0.15M NaCl, 40%Glycerol, 0.01% sodium azide and 0.05% BSA

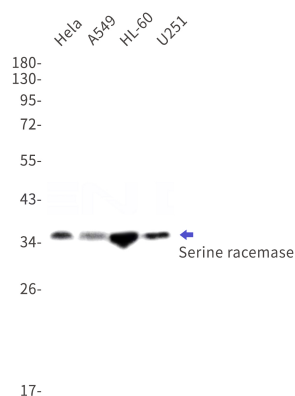
Storage

Store at 4°C short term. Store at -20°C long term. Avoid freeze / thaw cycle.

Clonality

Monoclonal

Ig Type



Western blot detection of Serine racemase in HeLa, A549, HL-60, U251 cell lysates using Serine racemase Rabbit mAb (1:1000 diluted). Predicted band size: 37 kDa. Observed band size: 37 kDa.