

RPS27A antibody

Catalog Number: 114839

Product name

RPS27A antibody

Specificity

Human, Mouse; other species not tested.

Antibody description

RPS27A Rabbit Polyclonal antibody. Positive WB detected in mouse cerebellum tissue, Jurkat cells. Positive IHC detected in human endometrial cancer tissue, human cerebellum tissue. Observed molecular weight by Western-blot: 9 kDa, 18 kDa

Preparation

This antibody was obtained by immunization of RPS27A recombinant protein (Accession Number: NM_001177413). Purification method: Antigen affinity purified.

Formulation

PBS with 0.1% sodium azide and 50% glycerol pH 7.3.

Storage

Store at -20°C. DO NOT ALIQUOT

Clonality

Polyclonal

Ig Type

Rabbit IgG

Applications

ELISA, WB, IHC

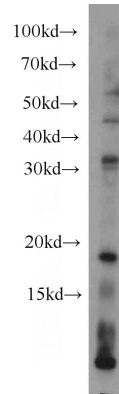
Dilutions

Recommended Dilution:

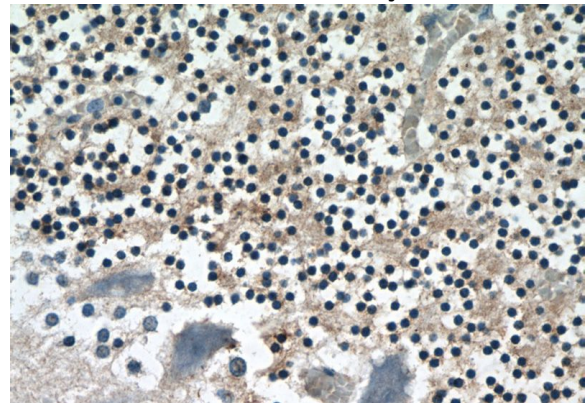
WB: 1:200-1:1000

IHC: 1:20-1:200

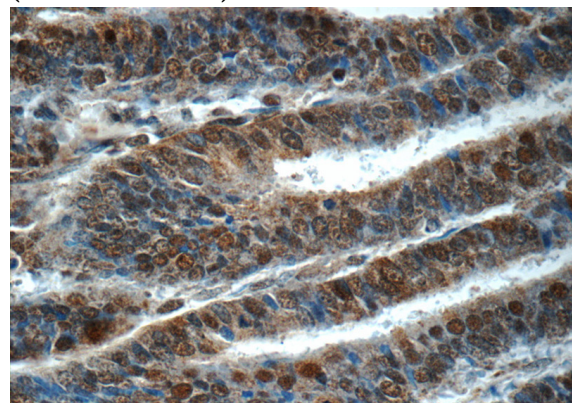
Validations



mouse cerebellum tissue were subjected to SDS PAGE followed by western blot with Catalog No:114839(RPS27A antibody) at dilution of 1:300



Immunohistochemistry of paraffin-embedded human cerebellum tissue slide using Catalog No:114839(RPS27A Antibody) at dilution of 1:50 (under 40x lens)



Immunohistochemistry of paraffin-embedded human endometrial cancer tissue slide using

RPS27A antibody



Catalog Number: 114839

Catalog No:114839(RPS27A Antibody) at dilution of 1:50 (under 40x lens)