

PITRM1 antibody

Catalog Number: 113839

Product name

PITRM1 antibody

Specificity

Human, Mouse, Rat; other species not tested.

Antibody description

PITRM1 Rabbit Polyclonal antibody. Positive IP detected in A549 cells. Positive WB detected in human placenta tissue, A549 cells, mouse testis tissue. Observed molecular weight by Western-blot: 110-117 kDa

Preparation

This antibody was obtained by immunization of PITRM1 recombinant protein (Accession Number: BC001150). Purification method: Antigen affinity purified.

Formulation

PBS with 0.1% sodium azide and 50% glycerol pH 7.3.

Storage

Store at -20°C. DO NOT ALIQUOT

Clonality

Polyclonal

Ig Type

Rabbit IgG

Applications

ELISA, WB, IP

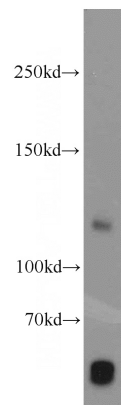
Dilutions

Recommended Dilution:

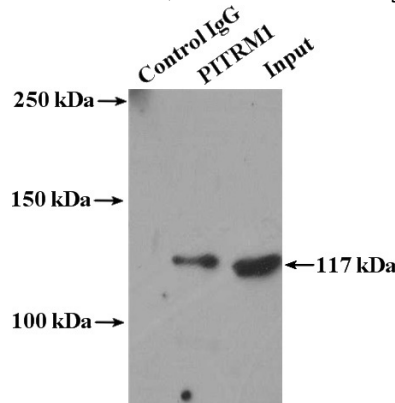
WB: 1:200-1:1000

IP: 1:200-1:2000

Validations



human placenta tissue were subjected to SDS PAGE followed by western blot with Catalog No:113839(PITRM1 antibody) at dilution of 1:300



IP Result of anti-PITRM1 (IP:Catalog No:113839, 4ug; Detection:Catalog No:113839 1:500) with A549 cells lysate 2000ug.