

# MAPKAP1 antibody

Catalog Number: 112439

## Product name

MAPKAP1 antibody

## Specificity

human, mouse, rat; other species not tested.

## Antibody description

MAPKAP1 Rabbit Polyclonal antibody. Positive WB detected in mouse skeletal muscle tissue, HeLa cells. Positive IHC detected in human heart. Observed molecular weight by Western-blot: 37-42kd,55kd

## Preparation

This antibody was obtained by immunization of Peptide (Accession Number: NM\_024117). Purification method: Antigen affinity purified.

## Formulation

PBS with 0.02% sodium azide and 50% glycerol pH 7.3.

## Storage

Store at -20°C. DO NOT ALIQUOT

## Clonality

Polyclonal

## Ig Type

Rabbit IgG

## Applications

ELISA, WB, IHC

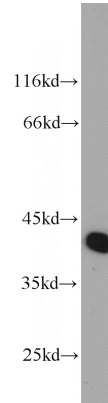
## Dilutions

Recommended Dilution:

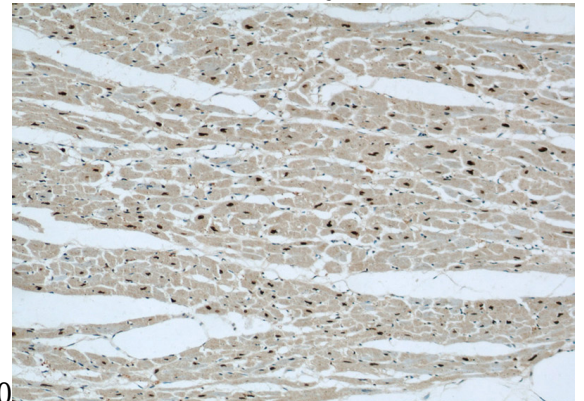
WB: 1:500-1:5000

IHC: 1:20-1:200

## Validations

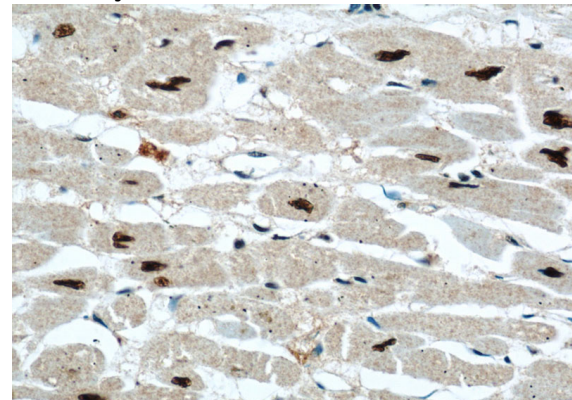


mouse skeletal muscle tissue were subjected to SDS PAGE followed by western blot with Catalog No:112439(MAPKAP1 antibody) at dilution of



1:1000

Immunohistochemical of paraffin-embedded human heart using Catalog No:112439(MAPKAP1 antibody) at dilution of 1:50 (under 10x lens)



Immunohistochemical of paraffin-embedded human heart using Catalog No:112439(MAPKAP1 antibody) at dilution of 1:50 (under 40x lens)