

Anti-REG3A antibody



Catalog Number: 102439

Product name

Anti-REG3A antibody

Immunogen

[Human REG3A \(His Tag\) recombinant protein](#)

Specificity

Human REG3A / HIP

Antibody description

Rabbit polyclonal to REG3A

Preparation

Produced in rabbits immunized with purified, recombinant Human REG3A (rh REG3A; Q06141-1; Met 1-Asp 175). REG3A specific IgG was purified by human REG3A affinity chromatography.

Formulation

0.2 μ m filtered solution in PBS with 5% trehalose

Storage

This antibody can be stored at 2°C-8°C for one month without detectable loss of activity. Antibody products are stable for twelve months from date of receipt when stored at -20°C to -80°C.

Preservative-Free.

Sodium azide is recommended to avoid contamination (final concentration 0.05%-0.1%). It is toxic to cells and should be disposed of properly. Avoid repeated freeze-thaw cycles.

Clonality

Polyclonal

Ig Type

Rabbit IgG

Applications

ELISA, WB

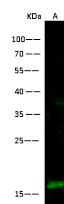
Dilutions

WB: 10-30 μ g/mL

ELISA: 0.5-1 μ g/mL

This antibody can be used at 0.5-1 μ g/mL with the appropriate secondary reagents to detect Human REG3A. The detection limit for Human REG3A is approximately 0.00245 ng/well.

Validations



Items	Lanes
Sample (whole cell lysate)	293T
Sample Volume (μ g/lane)	30
Gel	13% SDS-PAGE reducing gel
Recommended Concentration	10-30 μ g/ml
Secondary Antibody	Dylight 800-labeled Antibody To Rabbit IgG (H+L), at 1:5000 dilution.
Developed using Odyssey imaging system.	
Explanation	Predicted band size : 19 kDa Observed band size : 17 kDa

REG3A / HIP Antibody, Rabbit PAb, Antigen Affinity Purified, Western blot