

## General Information

### Gene Name Synonym

PTEN-like phosphatase; Phosphoinositide lipid phosphatase; Protein-tyrosine phosphatase mitochondrial 1

### Protein Construction

A DNA sequence encoding the human PTPMT1 isoform 1 (Q8WUK0-1) (Lys 28-Thr 201) was expressed, with a polyhistidine tag at the N-terminus.

### Organism

Human

### Expression Host

E. coli

## QC Testing

### Activity

Measured by its ability to cleave pNPP.  
The specific activity is >200 pmoles/min/ $\mu$ g.

### Purity

> 94 % as determined by SDS-PAGE

### Endotoxin

Please contact us for more information.

### Stability

Samples are stable for up to twelve months from date of receipt at -70°C

### Predicted N terminal

Met

## Molecular Mass

The recombinant human PTPMT1 consisting of 190 amino acids and has a calculated molecular mass of 21.7 kDa. It migrates as an 20 kDa band in SDS-PAGE under reducing conditions as predicted.

## Formulation

Lyophilized from sterile PBS, 10% glycerol, 1mM DTT, pH 7.5

1. 5 % trehalose and mannitol are added as protectants before lyophilization.

2. Please contact us for any concerns or special requirements.

## Usage Guide

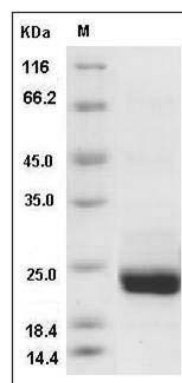
### Storage

Store it under sterile conditions at -20°C to -80°C. It is recommended that the protein be aliquoted for optimal storage. Avoid repeated freeze-thaw cycles.

### Reconstitution

Adding sterile water, prepare a stock solution of 0.25 mg/ml. Concentration is measured by UV-Vis.

## SDS-PAGE



Human PTPMT1 Protein (His Tag) SDS-PAGE