

Anti-CD68 antibody



Catalog Number: 175039

Product name

Anti-CD68 antibody

Specificity

Human

Antibody description

Mouse monoclonal antibody to CD68

Preparation

This antigen of this antibody was recombinant protein

Formulation

Liquid, 1*TBS (pH7.4), 1%BSA, 40%Glycerol.
Preservative: 0.05% Sodium Azide.

Storage

Store at +4°C after thawing. Aliquot store at -20°C or -80°C. Avoid repeated freeze / thaw cycles.

Clonality

Monoclonal

Ig Type

Mouse IgG1

Applications

WB, IHC-P, ICC, FC

Dilutions

WB: 1:500-1:2,000

ICC: 1:200-1:1,000

IHC-P: 1:200-1:1,000

FC: 1:50-1:100

Validations

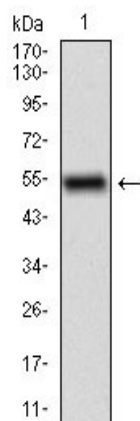
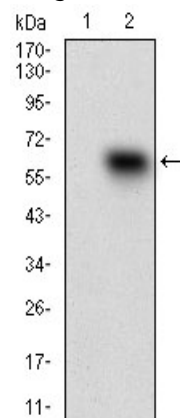
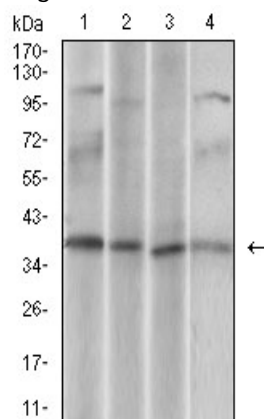


Fig1: Western blot analysis of CD68 on human CD68 recombinant protein using anti-CD68



antibody at 1/1,000 dilution.

Fig2: Western blot analysis of CD68 on HEK293 (1) and CD68-hIgGFc transfected HEK293 (2) cell lysate using anti-CD68 antibody at 1/1,000



dilution.

Fig3: Western blot analysis of CD68 on different cell lysate using anti-CD68 antibody at 1/1,000 dilution.; Positive control: Line1: U937 Line1: Hela Line2: HepG2 Line3: Jurkat

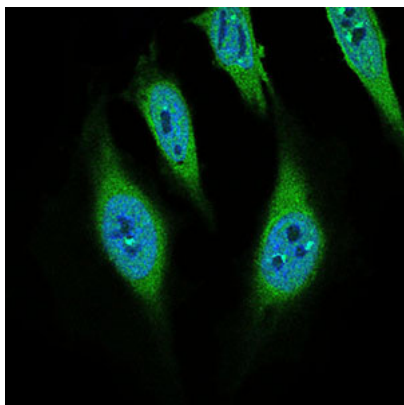


Fig4: ICC staining CD68 (green) and Actin filaments (red) in Hela cells. The nuclear counter stain is DAPI (blue). Cells were fixed in paraformaldehyde, permeabilised with 0.25% Triton X100/PBS.

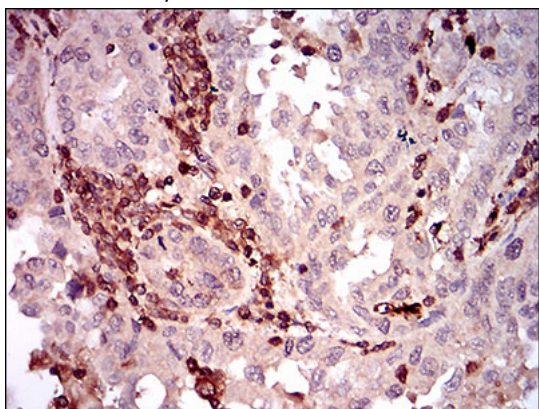


Fig5: Immunohistochemical analysis of paraffin-embedded human endometrial cancer tissue using anti-CD68 antibody. Counter stained with

hematoxylin.

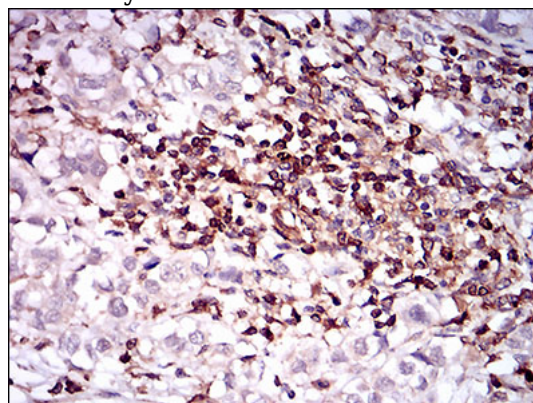
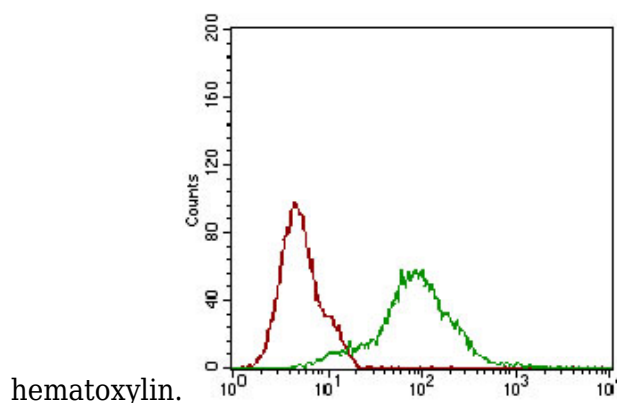


Fig6: Immunohistochemical analysis of paraffin-embedded human bladder cancer tissue using anti-CD68 antibody. Counter stained with



hematoxylin.

Fig7: Flow cytometric analysis of Hela cells with CD68 antibody at 1/100 dilution (green) compared with an unlabelled control (cells without incubation with primary antibody; red).