

# Anti-MMP12 Rabbit antibody



Catalog Number: 166729

## Product name

Anti-MMP12 Rabbit antibody

## Specificity

Human, Mouse, Rat

## Antibody description

MMP12 Rabbit polyclonal antibody

## Preparation

Antigen: A synthetic peptide of human MMP12

## Formulation

Supplied in 50nM Tris-Glycine(pH 7.4), 0.15M NaCl, 40%Glycerol, 0.01% sodium azide and 0.05% BSA.

## Storage

Store at -20°C. Stable for 12 months from date of receipt.

## Clonality

Polyclonal

## Ig Type

Rabbit IgG

## Applications

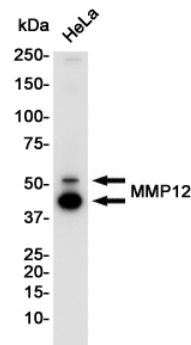
WB, IP

## Dilutions

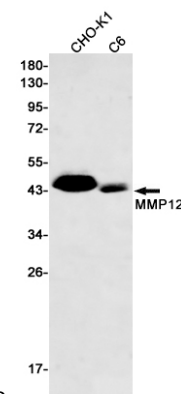
WB: 1/1000

IP: 1/20

## Validations



Western blot detection of MMP12 in HeLa cell lysates using MMP12 Rabbit pAb(1:1000 diluted). Predicted band size:54KDa. Observed



band size:54,45KDa.

Western blot detection of MMP12 in CHO-K1,C6 cell lysates using MMP12 Rabbit pAb(1:500 diluted). Predicted band size:54kDa. Observed band size:54,45kDa.