

STOM antibody



Catalog Number: 115729

Product name

STOM antibody

WB: 1:200-1:2000

IP: 1:200-1:1000

Specificity

Human; other species not tested.

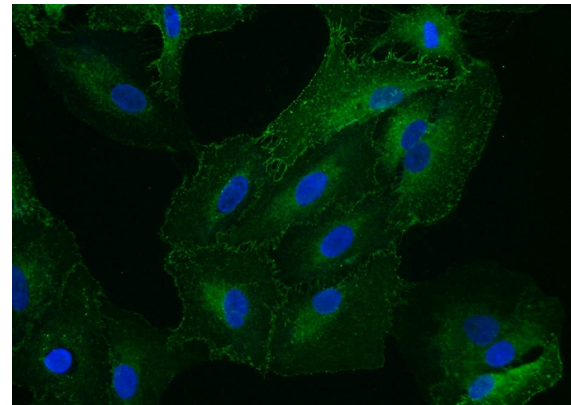
IHC: 1:20-1:200

IF: 1:10-1:100

Antibody description

STOM Rabbit Polyclonal antibody. Positive IF detected in A549 cells. Positive IHC detected in human lung cancer tissue. Positive IP detected in HeLa cells. Positive WB detected in human heart tissue, HeLa cells, human liver tissue, human lung tissue, K-562 cells. Observed molecular weight by Western-blot: 32 kDa

Validations



Immunofluorescent analysis of A549 cells using Catalog No:115729(STOM Antibody) at dilution of 1:25 and Alexa Fluor 488-conjugated AffiniPure

Preparation

This antibody was obtained by immunization of STOM recombinant protein (Accession Number: NM_004099). Purification method: Antigen affinity purified.

Formulation

PBS with 0.1% sodium azide and 50% glycerol pH 7.3.

Storage

Store at -20°C. DO NOT ALIQUOT

Clonality

Polyclonal

Ig Type

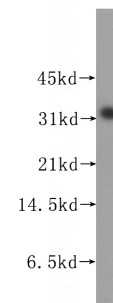
Rabbit IgG

Applications

ELISA, WB, IHC, IP, IF

Dilutions

Recommended Dilution:

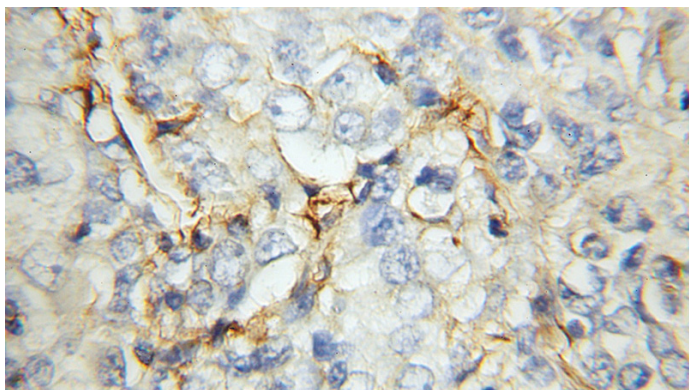


Goat Anti-Rabbit IgG(H+L)

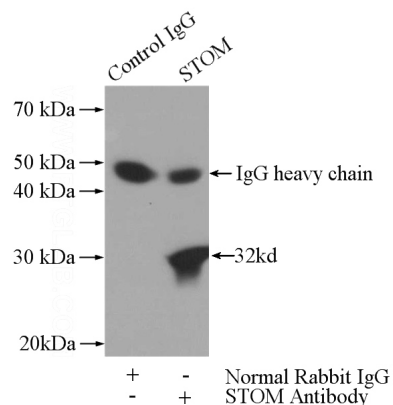
human heart tissue were subjected to SDS PAGE followed by western blot with Catalog No:115729(STOM antibody) at dilution of 1:500

STOM antibody

Catalog Number: 115729



Immunohistochemical of paraffin-embedded human lung cancer using Catalog No:115729(STOM antibody) at dilution of 1:100 (under 10x lens)



IP Result of anti-STOM (IP:Catalog No:115729, 3ug; Detection:Catalog No:115729 1:300) with HeLa cells lysate 2800ug.