

## General Information

### Gene Name Synonym

Amphiregulin-associated protein; Midgestation and kidney protein; Neurite outgrowth-promoting factor 2; Neurite outgrowth-promoting protein

### Protein Construction

A DNA sequence encoding the human MDK (P21741) (Met 1-Asp 143) was expressed and purified.

### Organism

Human

### Expression Host

Baculovirus-Insect Cells

## QC Testing

### Activity

Measured by its binding ability in a functional ELISA.

Immobilized human MDK (Cat:502729) at 10 µg/ml (100 µl/well) can bind mouse SDC4-Fc (Cat:503585) with a linear range of 0.16-1.25 µg/ml.

### Purity

> 95 % as determined by SDS-PAGE

### Endotoxin

< 1.0 EU per µg of the protein as determined by the LAL method

### Stability

Samples are stable for up to twelve months from date of receipt at -70°C

### Predicted N terminal

Val 21

### Molecular Mass

The secreted recombinant human MDK consists of 123 amino acids and predicts a molecular mass of 13.4 kDa. It migrates as an approximately 18 kDa band in SDS-PAGE under reducing conditions.

### Formulation

Lyophilized from sterile 50mM PBS, 1 M NaCl, pH 6.8

1. 5 % trehalose and mannitol are added as protectants before lyophilization.

2. Please contact us for any concerns or special requirements.

## Usage Guide

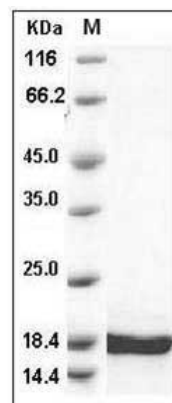
### Storage

Store it under sterile conditions at -20°C to -80°C. It is recommended that the protein be aliquoted for optimal storage. Avoid repeated freeze-thaw cycles.

### Reconstitution

Adding sterile water, prepare a stock solution of 0.25 mg/ml. Concentration is measured by UV-Vis.

### SDS-PAGE



Human Midkine / MDK Protein SDS-PAGE