

# HUWE1 antibody



Catalog Number: 111729

## Product name

HUWE1 antibody

## Specificity

Human, Mouse, Rat; other species not tested.

## Antibody description

HUWE1 Rabbit Polyclonal antibody. Positive WB detected in HEK-293. Observed molecular weight by Western-blot: 482 kDa

## Preparation

This antibody was obtained by immunization of HUWE1 recombinant protein (Accession Number: BC002602). Purification method: Antigen affinity purified.

## Formulation

PBS with 0.1% sodium azide and 50% glycerol pH 7.3.

## Storage

Store at -20°C. DO NOT ALIQUOT

## Clonality

Polyclonal

## Ig Type

Rabbit IgG

## Applications

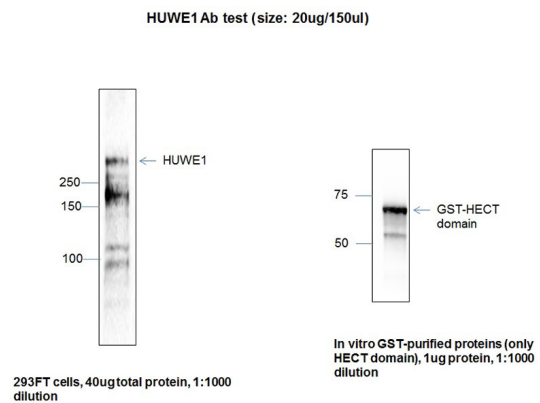
ELISA, WB

## Dilutions

Recommended Dilution:

WB: N/A

## Validations



WB result of HUWE1 antibody (Catalog No:111729, 1:1000) with 293 cells by Dr. Emilia Galperin, University of Kentucky.