

# C11orf30 Polyclonal Antibody



Catalog Number: 161729

---

## Product name

C11orf30 Polyclonal Antibody

## Specificity

Human, Mouse, Rat

## Antibody description

Polyclonal antibody to C11orf30

## Preparation

Antigen: Recombinant fusion protein containing a sequence corresponding to amino acids 1153-1322 of human C11orf30 (NP\_064578.2).

## Formulation

PBS with 0.02% sodium azide, 50% glycerol, pH7.3.

## Storage

Store at -20°C. Avoid freeze / thaw cycles.

## Clonality

Polyclonal

## Ig Type

Rabbit IgG

## Applications

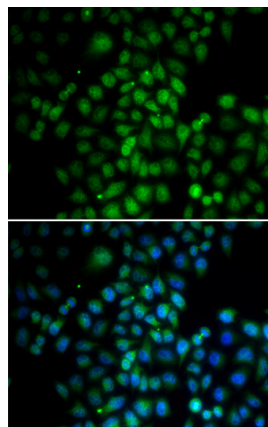
WB, IF

## Dilutions

WB 1:500 - 1:2000

IF 1:50 - 1:200

## Validations



Immunofluorescence - C11orf30 Polyclonal Antibody

Immunofluorescence analysis of HeLa cells using C11orf30 antibody . Blue: DAPI for nuclear staining.