

# SLC25A23 antibody



Catalog Number: 115329

## Product name

SLC25A23 antibody

## Specificity

human, mouse, rat; other species not tested.

## Antibody description

SLC25A23 Rabbit Polyclonal antibody. Positive WB detected in mouse pancreas tissue, mouse skeletal muscle tissue, mouse testis tissue, SH-SY5Y cells. Positive IHC detected in human pancreas. Observed molecular weight by Western-blot: 49-54kd

## Preparation

This antibody was obtained by immunization of SLC25A23 recombinant protein (Accession Number: BC001656). Purification method: Antigen affinity purified.

## Formulation

PBS with 0.02% sodium azide and 50% glycerol pH 7.3.

## Storage

Store at -20°C. DO NOT ALIQUOT

## Clonality

Polyclonal

## Ig Type

Rabbit IgG

## Applications

ELISA, WB, IHC

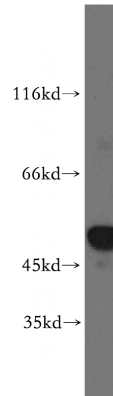
## Dilutions

Recommended Dilution:

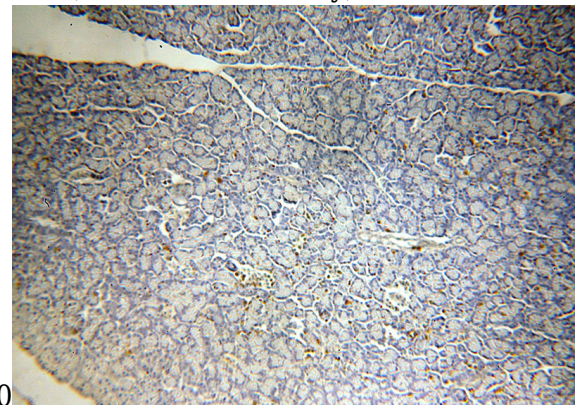
WB: 1:1000-1:10000

IHC: 1:20-1:200

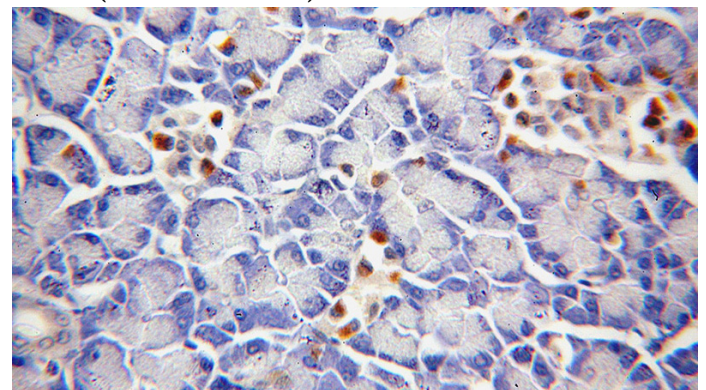
## Validations



mouse pancreas tissue were subjected to SDS PAGE followed by western blot with Catalog No:115329(SLC25A23 antibody) at dilution of



1:1000 Immunohistochemical of paraffin-embedded human pancreas using Catalog No:115329(SLC25A23 antibody) at dilution of 1:100 (under 10x lens)



Immunohistochemical of paraffin-embedded human pancreas using Catalog No:115329(SLC25A23 antibody) at dilution of

# SLC25A23 antibody



Catalog Number: 115329

---

1:100 (under 40x lens)