

# C1orf103 antibody



Catalog Number: 108629

## Product name

C1orf103 antibody

## Specificity

Human, Mouse; other species not tested.

## Antibody description

C1orf103 Rabbit Polyclonal antibody. Positive WB detected in L02 cells, mouse heart tissue, mouse liver tissue. Observed molecular weight by Western-blot: 85 kDa; 27 kDa

## Preparation

This antibody was obtained by immunization of C1orf103 recombinant protein (Accession Number: BC008115). Purification method: Antigen affinity purified.

## Formulation

PBS with 0.1% sodium azide and 50% glycerol pH 7.3.

## Storage

Store at -20°C. DO NOT ALIQUOT

## Clonality

Polyclonal

## Ig Type

Rabbit IgG

## Applications

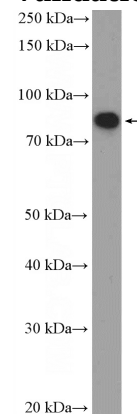
ELISA, WB

## Dilutions

Recommended Dilution:

WB: 1:500-1:5000

## Validations



L02 cells were subjected to SDS PAGE followed by western blot with Catalog No:108629(C1orf103 Antibody) at dilution of 1:1000