

NR1D1 antibody

Catalog Number: 113229

Product name

NR1D1 antibody

IP: 1:200-1:1000

IF: 1:50-1:500

Specificity

Human, Mouse; other species not tested.

Antibody description

NR1D1 Rabbit Polyclonal antibody. Positive IF detected in NIH/3T3 cells. Positive IP detected in A549 cells. Positive WB detected in NIH/3T3 cells, A549 cells, HeLa cells, MCF-7 cells. Observed molecular weight by Western-blot: 55-68 kDa

Preparation

This antibody was obtained by immunization of NR1D1 recombinant protein (Accession Number: NM_021724). Purification method: Antigen affinity purified.

Formulation

PBS with 0.1% sodium azide and 50% glycerol pH 7.3.

Storage

Store at -20°C. DO NOT ALIQUOT

Clonality

Polyclonal

Ig Type

Rabbit IgG

Applications

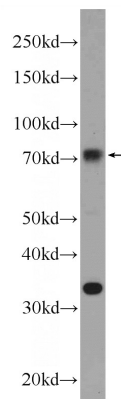
ELISA, WB, IP, IF

Dilutions

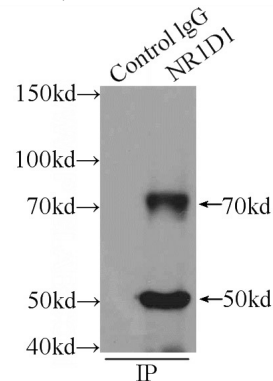
Recommended Dilution:

WB: 1:500-1:5000

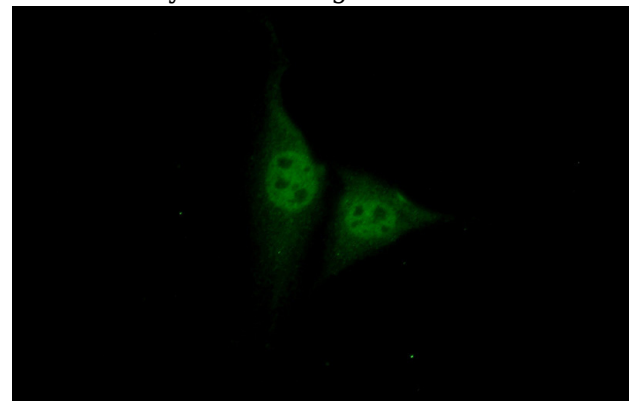
Validations



NIH/3T3 cells were subjected to SDS PAGE followed by western blot with Catalog No:113229(NR1D1 Antibody) at dilution of 1:1000



IP Result of anti-NR1D1 (IP:Catalog No:113229, 4ug; Detection:Catalog No:113229 1:300) with A549 cells lysate 1200ug.



Immunofluorescent analysis of (10% Formaldehyde) fixed NIH/3T3 cells using Catalog No:113229(NR1D1 Antibody) at dilution of 1:500.

NR1D1 antibody



Catalog Number: 113229

No:113229(NR1D1 Antibody) at dilution of 1:50

and Alexa Fluor 488-conjugated AffiniPure Goat
Anti-Rabbit IgG(H+L)