

Anti-EGFR/HER1/ErbB1 antibody



Catalog Number: 101229

Product name

Anti-EGFR/HER1/ErbB1 antibody

Immunogen

[Mouse EGFR/HER1/ErbB1 \(His Tag\) recombinant protein](#)

Specificity

Mouse EGFR / HER1 / ErbB1

Antibody description

Rabbit polyclonal to EGFR/HER1/ErbB1

Preparation

Produced in rabbits immunized with purified, recombinant Mouse EGFR / HER1 / ErbB1 (rM EGFR / HER1 / ErbB1; Q01279; Met1-Ser647). EGFR / HER1 / ErbB1 specific IgG was purified by Mouse EGFR / HER1 / ErbB1 affinity chromatography.

Formulation

0.2 µm filtered solution in PBS

Storage

This antibody can be stored at 2°C-8°C for one month without detectable loss of activity. Antibody products are stable for twelve months from date of receipt when stored at -20°C to -80°C.

Preservative-Free.

Sodium azide is recommended to avoid contamination (final concentration 0.05%-0.1%). It is toxic to cells and should be disposed of properly. Avoid repeated freeze-thaw cycles.

Clonality

Polyclonal

Ig Type

Rabbit IgG

Applications

ELISA, WB, IP

Dilutions

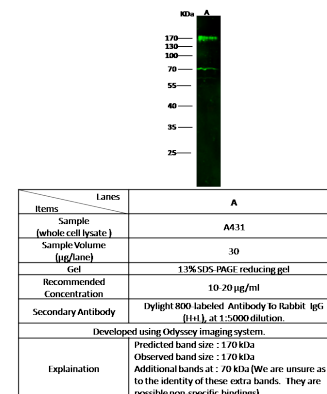
WB: 10-20 µg/ml

ELISA: 0.1-0.2 µg/ml

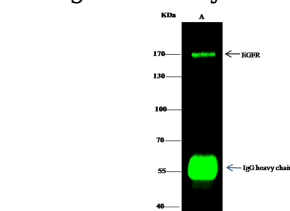
This antibody can be used at 0.1-0.2 µg/ml with the appropriate secondary reagents to detect Mouse EGFR / HER1 / ErbB1. The detection limit for Mouse EGFR / HER1 / ErbB1 is approximately 0.00245 ng/well.

IP: 1-4 µg/mg of lysate

Validations



EGFR / HER1 / ErbB1 Antibody, Rabbit PAb, Antigen Affinity Purified, Western blot



Items	Lanes	A
Sample (whole cell lysate)		Hela
Sample quantity		0.5 mg
IP antibody quantity		4 µg
Protein G agarose		15 µl of 50% Protein G Agarose
Gel		13% SDS-PAGE reducing gel
Primary antibody		mEGFR-His antibody at 15 µg/ml
Secondary antibody		DyLight 800-labeled antibody to rabbit IgG (1:1), at 1:5000 dilution

EGFR / HER1 / ErbB1 Antibody, Rabbit PAb, Antigen Affinity Purified, Immunoprecipitation

Immunochemical staining of human CRELD1 in

Anti-EGFR/HER1/ErbB1 antibody



Catalog Number: 101229

human brain with rabbit polyclonal antibody (1 $\mu\text{g}/\text{mL}$, formalin-fixed paraffin embedded sections).