

# RPL38 Polyclonal Antibody



Catalog Number: 160929

## Product name

RPL38 Polyclonal Antibody

## Specificity

Human

## Antibody description

Polyclonal antibody to RPL38

## Preparation

Antigen: Recombinant fusion protein containing a sequence corresponding to amino acids 1-70 of human RPL38 (NP\_000990.1).

## Formulation

PBS with 0.02% sodium azide, 50% glycerol, pH7.3.

## Storage

Store at -20°C. Avoid freeze / thaw cycles.

## Clonality

Polyclonal

## Ig Type

Rabbit IgG

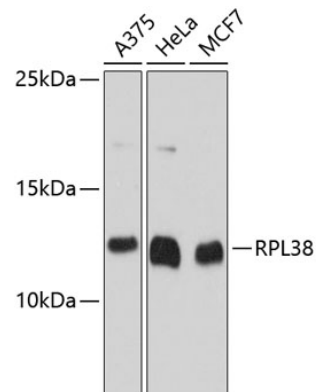
## Applications

WB

## Dilutions

WB 1:500 - 1:2000

## Validations



Western blot - RPL38 Polyclonal Antibody

Western blot analysis of extracts of various cell lines, using RPL38 antibody at 1:3000 dilution. Secondary antibody: HRP Goat Anti-Rabbit IgG (H+L) at 1:10000 dilution. Lysates/proteins: 25ug per lane. Blocking buffer: 3% nonfat dry milk in TBST. Detection: ECL Basic Kit. Exposure time: 30s.