

# Anti-Calumenin antibody



Catalog Number: 105529

## Product name

Anti-Calumenin antibody

## Immunogen

[Human Calumenin \(His Tag\) recombinant protein](#)

## Specificity

Human Calumenin / CALU

## Antibody description

Rabbit polyclonal to Calumenin

## Preparation

Produced in rabbits immunized with purified, recombinant Human Calumenin / CALU (rh Calumenin / CALU; O43852-1; Met1-Arg311). Calumenin / CALU specific IgG was purified by Human Calumenin / CALU affinity chromatography.

## Formulation

0.2 µm filtered solution in PBS

## Storage

This antibody can be stored at 2°C-8°C for one month without detectable loss of activity. Antibody products are stable for twelve months from date of receipt when stored at -20°C to -80°C.

Preservative-Free.

Sodium azide is recommended to avoid contamination (final concentration 0.05%-0.1%). It is toxic to cells and should be disposed of properly. Avoid repeated freeze-thaw cycles.

## Clonality

Polyclonal

## Ig Type

Rabbit IgG

## Applications

ELISA, WB, IP

## Dilutions

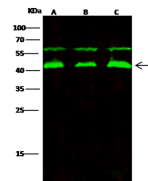
WB: 2-10 µg/ml

ELISA: 0.1-0.2 µg/ml

This antibody can be used at 0.1-0.2 µg/ml with the appropriate secondary reagents to detect Human Calumenin / CALU. The detection limit for Human Calumenin / CALU is < 0.039 ng/well.

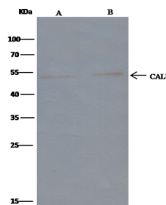
IP: 4-6 uL/mg of lysate

## Validations



Lanes	A	B	C
Sample (whole cell lysate)	K562	Jurkat	A431
Sample Volume (µg/lane)	30	30	30
Gel	13% SDS-PAGE reducing gel		
Recommended Concentration	2-10 µg/ml		
Secondary Antibody	Dylight 800 labeled Antibody to Rabbit IgG (H+), at 1:5000 dilution.		
Explanation	Developed using Odyssey imaging system. Predicted band size : 57 kDa Observed band size : 45 kDa Additional bands at : 57 kDa (We are unsure as to the identity of these extra bands. They are possible non-specific bindings).		

Calumenin / CALU Antibody, Rabbit PAb, Antigen Affinity Purified, Western blot



Lanes	A	B
Sample (whole cell lysate)	Jurkat	K562
Sample quantity	0.5 mg	
IP antibody quantity	2 µg	
Immunomagnetic beads Protein G	60 µg	
Gel	13% SDS-PAGE reducing gel	
Primary antibody	CALU-His antibody at 10 µg/ml	
Secondary antibody	Clean-Block IP Detection Reagent (HRP) at 1:500 dilution	

Calumenin / CALU Antibody, Rabbit PAb, Antigen Affinity Purified, Immunoprecipitation