

# OXSR1 antibody

Catalog Number: 113529

## Product name

OXSR1 antibody

WB: 1:500-1:5000

IP: 1:200-1:2000

## Specificity

Human, Mouse, Rat; other species not tested.

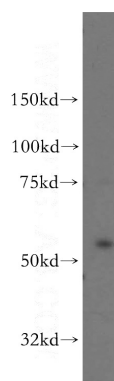
IHC: 1:20-1:200

IF: 1:10-1:100

## Antibody description

OXSR1 Rabbit Polyclonal antibody. Positive IP detected in HeLa cells. Positive WB detected in HeLa cells, human liver tissue, human testis tissue. Positive IHC detected in human prostate cancer tissue. Positive IF detected in MCF-7 cells. Observed molecular weight by Western-blot: 58 kDa

## Validations



## Preparation

This antibody was obtained by immunization of OXSR1 recombinant protein (Accession Number: NM\_005109). Purification method: Antigen affinity purified.

HeLa cells were subjected to SDS PAGE followed by western blot with Catalog No:113529(OXSR1 antibody) at dilution of 1:500

## Formulation

PBS with 0.02% sodium azide and 50% glycerol pH 7.3.

## Storage

Store at -20°C. DO NOT ALIQUOT

## Clonality

Polyclonal

## Ig Type

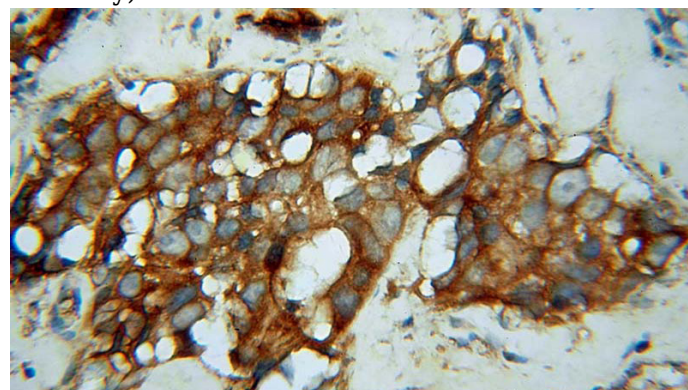
Rabbit IgG

## Applications

ELISA, WB, IHC, IF, IP

## Dilutions

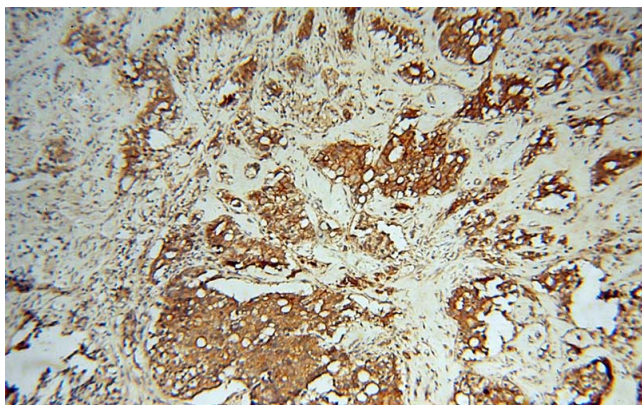
Recommended Dilution:



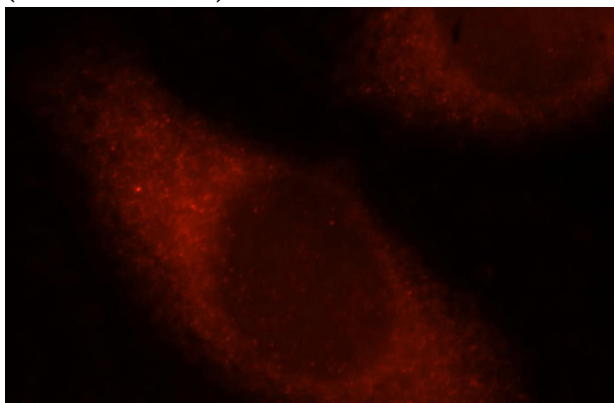
Immunohistochemical of paraffin-embedded human prostate cancer using Catalog No:113529(OXSR1 antibody) at dilution of 1:100 (under 40x lens)

# OCSR1 antibody

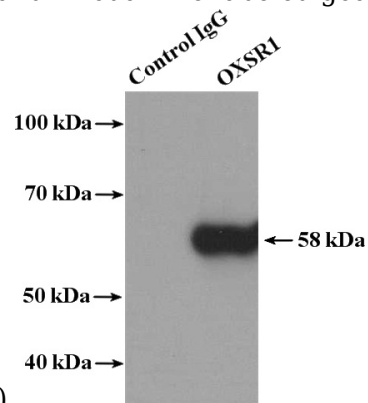
Catalog Number: 113529



Immunohistochemical of paraffin-embedded human prostate cancer using Catalog No:113529(OCSR1 antibody) at dilution of 1:100 (under 10x lens)



Immunofluorescent analysis of MCF-7 cells, using OCSR1 antibody Catalog No:113529 at 1:25 dilution and Rhodamine-labeled goat anti-rabbit



IgG (red).

IP Result of anti-OCSR1 (IP:Catalog No:113529, 4ug; Detection:Catalog No:113529 1:500) with HeLa cells lysate 3200ug.