

Anti-Human Serum Albumin (1A8) Mouse antibody



Catalog Number: 168129

Product name

Anti-Human Serum Albumin (1A8) Mouse antibody

Specificity

Human

Antibody description

Human Serum Albumin (1A8) Mouse monoclonal antibody

Preparation

Antigen: Purified Human serum albumin.

Formulation

Purified mouse monoclonal in PBS(pH 7.4) containing with 0.02% sodium azide and 50% glycerol.

Storage

Store at 4°C short term. Store at -20°C long term. Avoid freeze / thaw cycle.

Clonality

Monoclonal

Ig Type

Mouse IgG1

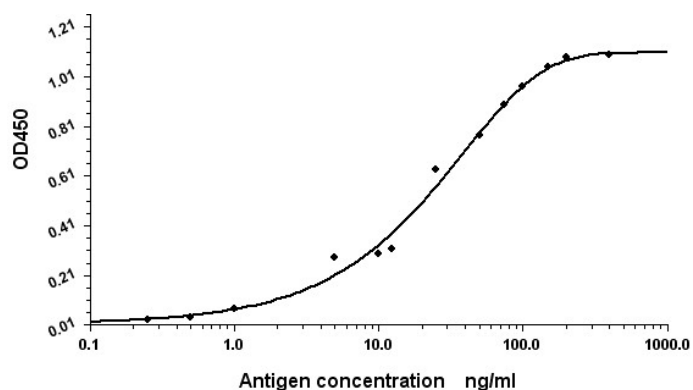
Applications

ELISA, WB

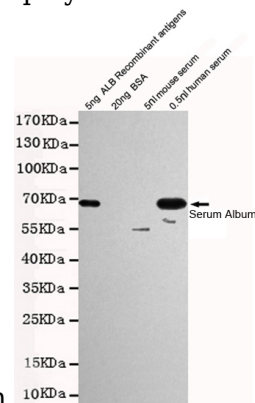
Dilutions

WB: 1/1000

Validations

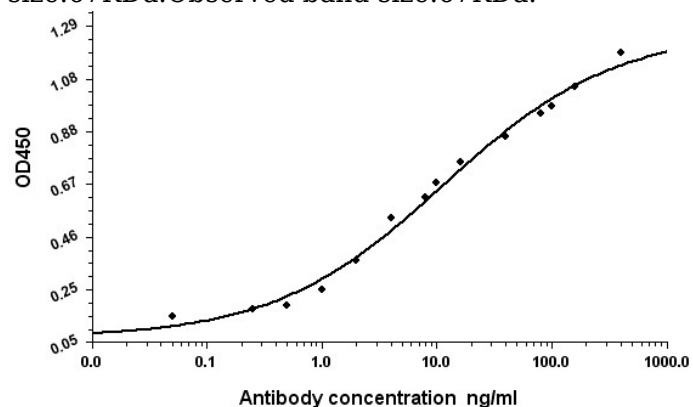


Standard Curve for Human Serum Albumin (Analyte: Human Serum Albumin protein); using Capture Antibody Mouse monoclonal [1A8-C5-B4] to Human Serum Albumin at 8ug/ml and Detector Antibody Rabbit polyclonal antiserum to Human



Serum Albumin.

Western blot detection of Human Serum Albumin in 0.5nl human serum and 5ng ALB Recombinant antigens cell lysates using Human Serum Albumin mouse mAb (1:1000 diluted). Predicted band size:67KDa.Observed band size:67KDa.



Indirect ELISA assay for anti-Human Serum Albumin mouse mAb. Antigen coating concentration: 8ug/ml.