

CALML6 antibody

Catalog Number: 108829

Product name

CALML6 antibody

Specificity

Human; other species not tested.

Antibody description

CALML6 Rabbit Polyclonal antibody. Positive WB detected in human heart tissue. Positive IHC detected in human heart tissue, human prostate hyperplasia tissue. Observed molecular weight by Western-blot: 20-25 kDa

Preparation

This antibody was obtained by immunization of Peptide (Accession Number: NM_138705). Purification method: Antigen affinity purified.

Formulation

PBS with 0.02% sodium azide and 50% glycerol pH 7.3.

Storage

Store at -20°C. DO NOT ALIQUOT

Clonality

Polyclonal

Ig Type

Rabbit IgG

Applications

ELISA, WB, IHC

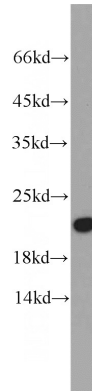
Dilutions

Recommended Dilution:

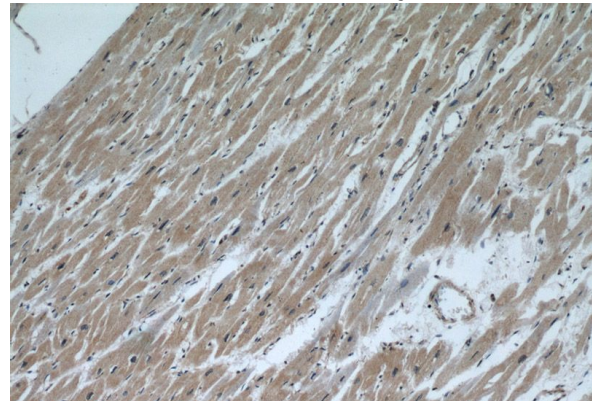
WB: 1:200-1:2000

IHC: 1:20-1:200

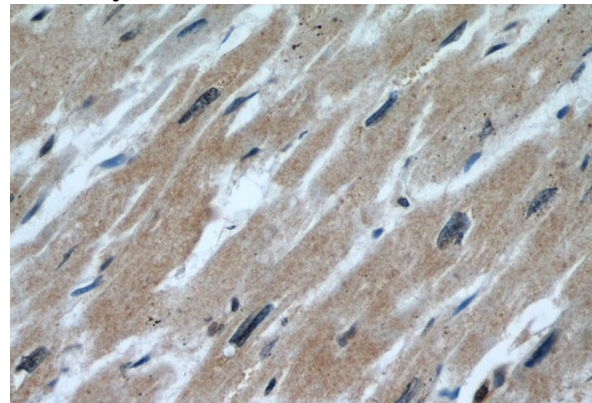
Validations



human heart tissue were subjected to SDS PAGE followed by western blot with Catalog No:108829(CALML6 antibody) at dilution of 1:500



Immunohistochemical of paraffin-embedded human heart using Catalog No:108829(CALML6 antibody) at dilution of 1:50 (under 10x lens)



Immunohistochemical of paraffin-embedded human heart using Catalog No:108829(CALML6 antibody) at dilution of 1:50 (under 40x lens)