

RPS14 antibody

Catalog Number: 114829

Product name

RPS14 antibody

IHC: 1:20-1:200

IF: 1:10-1:100

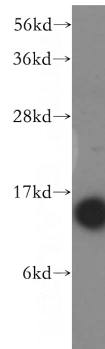
Specificity

Human, Mouse, Rat; other species not tested.

Antibody description

RPS14 Rabbit Polyclonal antibody. Positive IF detected in HepG2 cells, U2OS cells. Positive IHC detected in human liver tissue. Positive WB detected in HepG2 cells, HeLa cells, mouse liver tissue. Observed molecular weight by Western-blot: 16kd

Validations



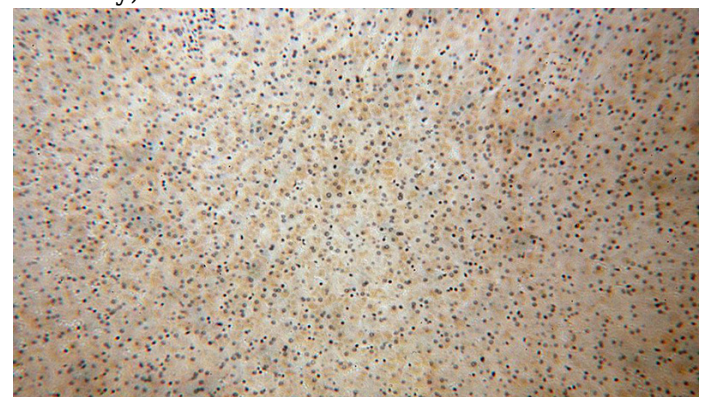
Preparation

This antibody was obtained by immunization of RPS14 recombinant protein (Accession Number: NM_005617). Purification method: Antigen affinity purified.

HepG2 cells were subjected to SDS PAGE followed by western blot with Catalog No:114829(RPS14 antibody) at dilution of 1:1000

Formulation

PBS with 0.02% sodium azide and 50% glycerol pH 7.3.



Storage

Store at -20°C. DO NOT ALIQUOT

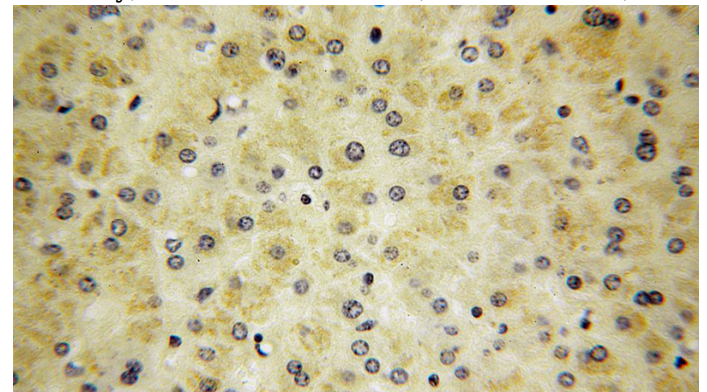
Clonality

Polyclonal

Immunohistochemical of paraffin-embedded human liver using Catalog No:114829(RPS14 antibody) at dilution of 1:200 (under 10x lens)

Ig Type

Rabbit IgG



Applications

ELISA, WB, IHC, IF

Dilutions

Recommended Dilution:

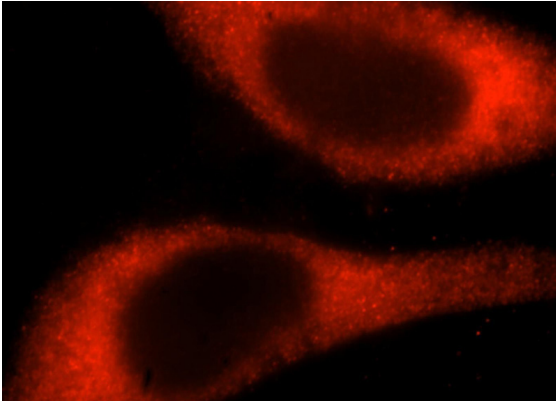
WB: 1:1000-1:10000

Immunohistochemical of paraffin-embedded human liver using Catalog No:114829(RPS14 antibody) at dilution of 1:200 (under 10x lens)

RPS14 antibody

Catalog Number: 114829

antibody) at dilution of 1:200 (under 40x lens)



Immunofluorescent analysis of HepG2 cells, using RPS14 antibody Catalog No:114829 at 1:25 dilution and Rhodamine-labeled goat anti-rabbit IgG (red).