

SDF2L1 antibody

Catalog Number: 115029

Product name

SDF2L1 antibody

Specificity

human, mouse, rat; other species not tested.

Antibody description

SDF2L1 Rabbit Polyclonal antibody. Positive WB detected in mouse pancreas tissue, mouse testis tissue. Positive IHC detected in human testis. Observed molecular weight by Western-blot: 24kd

Preparation

This antibody was obtained by immunization of SDF2L1 recombinant protein (Accession Number: BC006248). Purification method: Antigen affinity purified.

Formulation

PBS with 0.02% sodium azide and 50% glycerol pH 7.3.

Storage

Store at -20°C. DO NOT ALIQUOT

Clonality

Polyclonal

Ig Type

Rabbit IgG

Applications

ELISA, WB, IHC

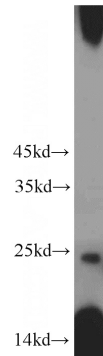
Dilutions

Recommended Dilution:

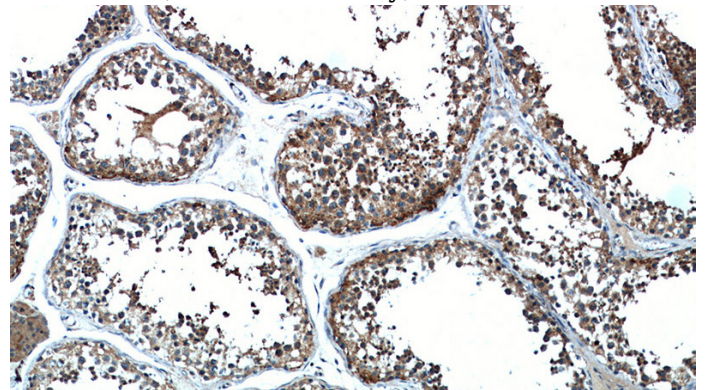
WB: 1:200-1:2000

IHC: 1:20-1:200

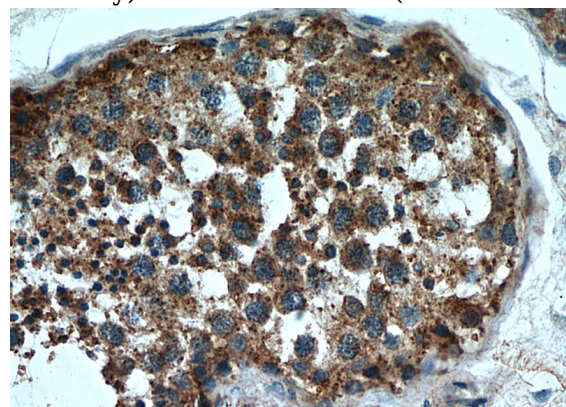
Validations



mouse pancreas tissue were subjected to SDS PAGE followed by western blot with Catalog No:115029(SDF2L1 antibody) at dilution of 1:500



Immunohistochemical of paraffin-embedded human testis using Catalog No:115029(SDF2L1 antibody) at dilution of 1:50 (under 10x lens)



Immunohistochemical of paraffin-embedded human testis using Catalog No:115029(SDF2L1 antibody) at dilution of 1:50 (under 40x lens)