

NCAPD2 antibody

Catalog Number: 113029

Product name

NCAPD2 antibody

IP: 1:200-1:2000

IF: 1:20-1:200

Specificity

Human, Mouse, Rat; other species not tested.

Antibody description

NCAPD2 Rabbit Polyclonal antibody. Positive IP detected in HEK-293 cells. Positive WB detected in HEK-293 cells, HeLa cells, K-562 cells. Positive IF detected in HeLa cells. Observed molecular weight by Western-blot: 157 kDa

Preparation

This antibody was obtained by immunization of NCAPD2 recombinant protein (Accession Number: NM_014865). Purification method: Antigen affinity purified.

Formulation

PBS with 0.02% sodium azide and 50% glycerol pH 7.3.

Storage

Store at -20°C. DO NOT ALIQUOT

Clonality

Polyclonal

Ig Type

Rabbit IgG

Applications

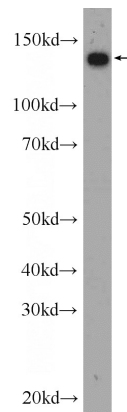
ELISA, IF, WB, IP

Dilutions

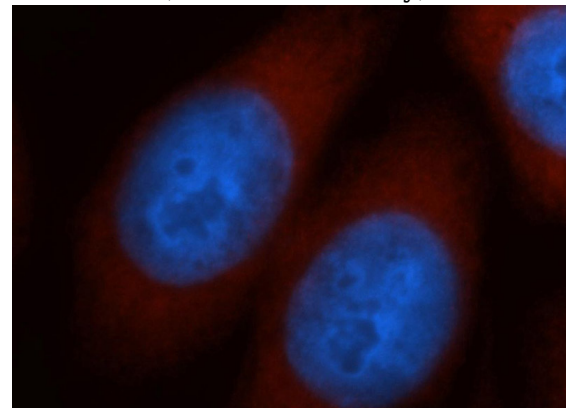
Recommended Dilution:

WB: 1:200-1:2000

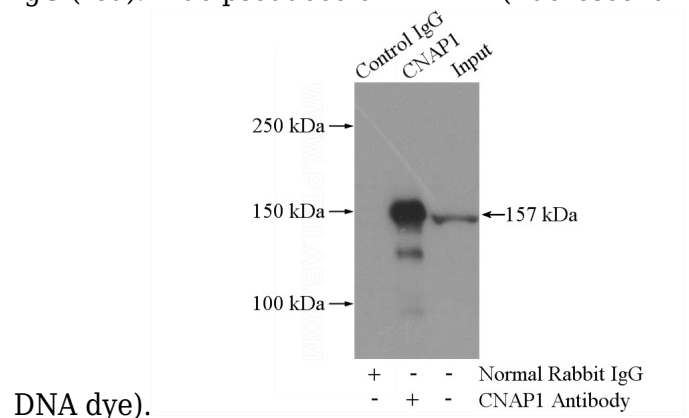
Validations



HEK-293 cells were subjected to SDS PAGE followed by western blot with Catalog No:113029(NCAPD2 Antibody) at dilution of 1:600



Immunofluorescent analysis of HeLa cells, using NCAPD2 antibody Catalog No:113029 at 1:50 dilution and Rhodamine-labeled goat anti-rabbit IgG (red). Blue pseudocolor = DAPI (fluorescent



NCAPD2 antibody



Catalog Number: 113029

IP Result of anti-NCAPD2 (IP:Catalog No:113029, 4ug; Detection:Catalog No:113029 1:600) with HEK-293 cells lysate 2800ug.