

KDM5C antibody

Catalog Number: 112029

Product name

KDM5C antibody

Specificity

Human, Mouse, Rat; other species not tested.

Antibody description

KDM5C Rabbit Polyclonal antibody. Positive WB detected in HeLa cells. Positive IF detected in HeLa cells. Observed molecular weight by Western-blot: 171-180 kDa

Preparation

This antibody was obtained by immunization of KDM5C recombinant protein (Accession Number: NM_001282622). Purification method: Antigen affinity purified.

Formulation

PBS with 0.1% sodium azide and 50% glycerol pH 7.3.

Storage

Store at -20°C. DO NOT ALIQUOT

Clonality

Polyclonal

Ig Type

Rabbit IgG

Applications

ELISA, WB, IF

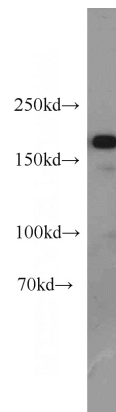
Dilutions

Recommended Dilution:

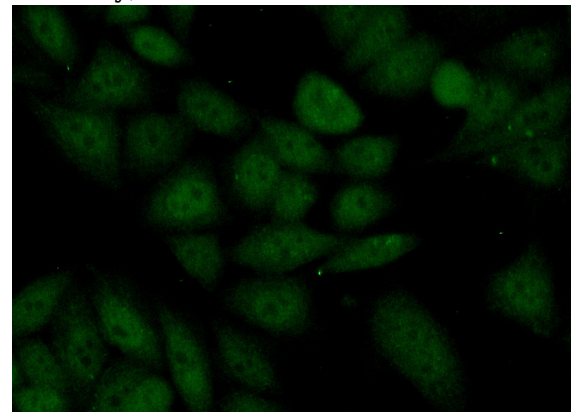
WB: 1:200-1:2000

IF: 1:50-1:500

Validations



HeLa cells were subjected to SDS PAGE followed by western blot with Catalog No:112029(KDM5C antibody) at dilution of 1:500



Immunofluorescent analysis of (10% Formaldehyde) fixed HeLa cells using Catalog No:112029(KDM5C Antibody) at dilution of 1:50 and Alexa Fluor 488-conjugated AffiniPure Goat Anti-Rabbit IgG(H+L)