

Anti-EBOV-G / Glycoprotein antibody



Catalog Number: 101029

Product name

Anti-EBOV-G / Glycoprotein antibody

Immunogen

[EBOV EBOV-G / Glycoprotein \(His Tag\)](#)

Specificity

Ebola virus EBOV (subtype Zaire, strain Mayinga 1976) GP-RBD / Glycoprotein

Has cross-reactivity in WB with Ebola virus EBOV (subtype Zaire, strain H.sapiens-wt/GIN/2014/Kissidougou-C15) Glycoprotein / GP-RBD Protein (His Tag) (504337); Ebola virus EBOV (subtype Zaire, strain Mayinga 1976) Glycoprotein / GP Protein (His Tag) (502529); Ebola virus EBOV (Subtype Sudan, strain Gulu) Glycoprotein / GP1 (mucin domain deleted) Protein (aa:Met1-Asp320, His Tag)(503320)

Antibody description

Rabbit polyclonal to EBOV-G / Glycoprotein

Preparation

Produced in rabbits immunized with purified, recombinant Ebola virus EBOV (subtype Zaire, strain Mayinga 1976) GP-RBD / Glycoprotein (AAC54887.1; Met1-Phe308), and purified by antigen affinity chromatography.

Formulation

0.2 µm filtered solution in PBS

Storage

This antibody can be stored at 2°C-8°C for one month without detectable loss of activity. Antibody products are stable for twelve months from date of receipt when stored at -20°C to -80°C. Preservative-Free.

Sodium azide is recommended to avoid contamination (final concentration 0.05%-0.1%). It is toxic to cells and should be disposed of properly. Avoid repeated freeze-thaw cycles.

Clonality

Polyclonal

Ig Type

Rabbit IgG

Applications

ELISA, WB, IHC-P, IP

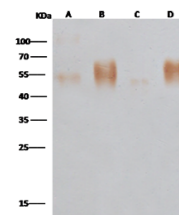
Dilutions

WB: 1-2 µg/ml

ELISA: 0.1-0.2 µg/ml

This antibody can be used at 0.1-0.2 µg/ml with the appropriate secondary reagents to detect Ebola virus EBOV (subtype Zaire, strain Mayinga 1976) GP-RBD / Glycoprotein.

Validations



Items \ Lanes	A	B	C	D
Sample (Recombinant protein)	GP (Z-EBOV-1976) [Cat#40304-V08B1]	GP (Z-EBOV-1976) [Cat#40304-V08H]	GP (S-EBOV-2000) [Cat#40094-V08B]	GP (Z-EBOV-2014) [Cat#40442-V08H]
Sample Volume (ng/lane)	10	10	10	10
Gel	13% SDS-PAGE reducing gel			
Recommended Concentration	1-2 µg/ml			
Secondary Antibody	HRP Conjugated Goat-anti-Rabbit IgG (1:1), at 1:1000 dilution			

Ebola virus EBOV (subtype Zaire, strain Mayinga 1976) GP-RBD / Glycoprotein Antibody, Rabbit PAb, Antigen Affinity Purified, Western blot