

# CTCF antibody

Catalog Number: 109719

## Product name

CTCF antibody

IP: 1:200-1:1000

IHC: 1:20-1:200

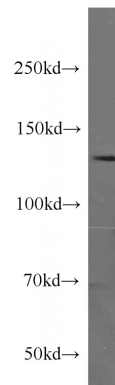
## Specificity

Human, Rat; other species not tested.

## Validations

## Antibody description

CTCF Rabbit Polyclonal antibody. Positive IP detected in MCF-7 cells. Positive WB detected in human brain tissue, 4T1 cells, HEK-293T cells, U-937 cells. Positive IHC detected in human lymphoma tissue. Observed molecular weight by Western-blot: 130-140 kDa



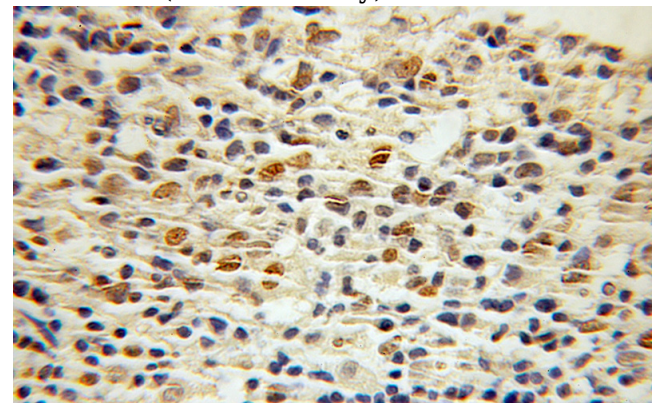
## Preparation

This antibody was obtained by immunization of CTCF recombinant protein (Accession Number: XM\_017022868). Purification method: Antigen affinity purified.

human brain tissue were subjected to SDS PAGE followed by western blot with Catalog No:109719(CTCF antibody) at dilution of 1:500

## Formulation

PBS with 0.1% sodium azide and 50% glycerol pH 7.3.



## Storage

Store at -20°C. DO NOT ALIQUOT

## Clonality

Polyclonal

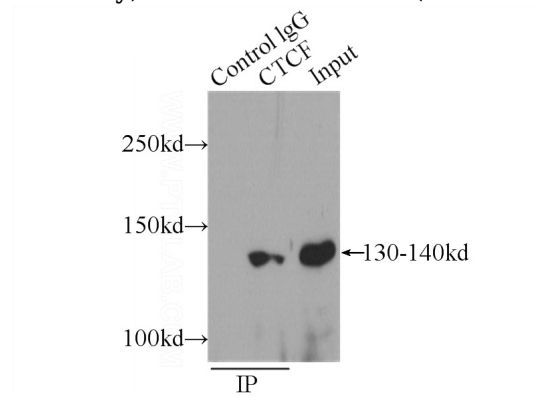
Immunohistochemical of paraffin-embedded human lymphoma using Catalog No:109719(CTCF antibody) at dilution of 1:100 (under 10x lens)

## Ig Type

Rabbit IgG

## Applications

ELISA, WB, IHC, IP



## Dilutions

Recommended Dilution:

WB: 1:200-1:2000

IP Result of anti-CTCF (IP:Catalog No:109719, 5ug; Detection:Catalog No:109719 1:300) with

# CTCF antibody



Catalog Number: 109719

---

MCF-7 cells lysate 2560ug.