

Anti-LRRC3B/LRP15 antibody



Catalog Number: 105719

Product name

Anti-LRRC3B/LRP15 antibody

Immunogen

[Human LRRC3B/LRP15 \(His Tag\) recombinant protein](#)

Specificity

Human LRRC3B

Antibody description

Rabbit polyclonal to LRRC3B/LRP15

Preparation

Produced in rabbits immunized with purified, recombinant Human LRRC3B (rh LRRC3B; NP_443185.1; Met1-Tyr204). LRRC3B specific IgG was purified by Human LRRC3B affinity chromatography.

Formulation

0.2 µm filtered solution in PBS

Storage

This antibody can be stored at 2°C-8°C for one month without detectable loss of activity. Antibody products are stable for twelve months from date of receipt when stored at -20°C to -80°C. Preservative-Free.

Sodium azide is recommended to avoid contamination (final concentration 0.05%-0.1%). It is toxic to cells and should be disposed of properly. Avoid repeated freeze-thaw cycles.

Clonality

Polyclonal

Ig Type

Rabbit IgG

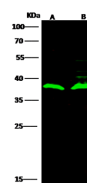
Applications

WB

Dilutions

WB: 5-10 µg/ml

Validations



| Lanes | A | B |
|---|--|--------|
| Sample (whole cell lysate) | A549 | HEK293 |
| Sample Volume (µg/lane) | 30 | 30 |
| Gel | 13% SDS-PAGE reducing gel | |
| Recommended Concentration | 5-10 µg/ml | |
| Secondary Antibody | Dylight 800 labeled Antibody to Rabbit IgG (H+), at 1:5000 dilution. | |
| Developed using Odyssey imaging system. | | |
| Explanation | Predicted band size : 29 kDa Observed band size : 38 kDa Additional bands at : 40 kDa (We are unsure as to the identity of these extra bands.) | |

LRRC3B Antibody, Rabbit PAb, Antigen Affinity Purified, Western blot