

# Anti-TWF1/Twinfilin-1 (5F10) Mouse antibody



Catalog Number: 168319

## Product name

Anti-TWF1/Twinfilin-1 (5F10) Mouse antibody

## Specificity

Human

## Antibody description

TWF1/Twinfilin-1 (5F10) Mouse monoclonal antibody

## Preparation

Antigen: Purified recombinant fragment of human TWF1 (AA: 335-384 ) expressed in E. Coli.

## Formulation

Purified antibody in PBS with 0.05% sodium azide

## Storage

Store at 4°C short term. Store at -20°C long term. Avoid freeze / thaw cycle.

## Clonality

Monoclonal

## Ig Type

Mouse IgG1

## Applications

WB, IHC-P, ICC/IF, FC

## Dilutions

WB: 1/500 - 1/2000

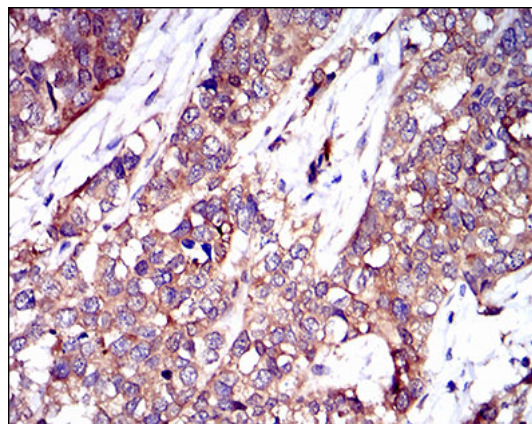
IHC: 1/200 - 1/1000

ICC: 1/100

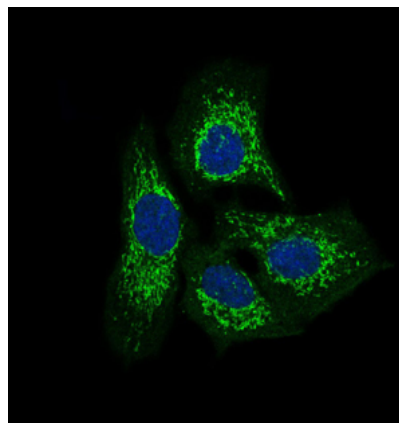
FC: 1/200 - 1/400

ELISA: 1/10000

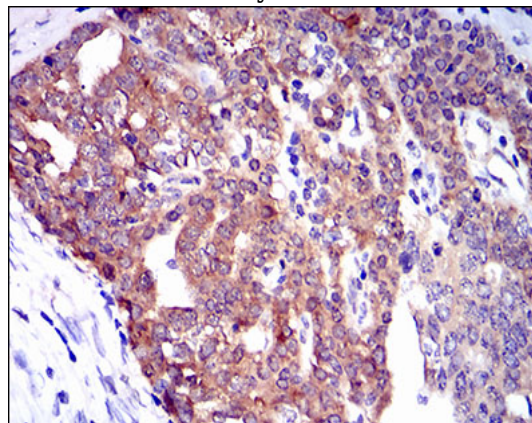
## Validations



Immunohistochemical analysis of paraffin-embedded bladder cancer tissues using TWF1 mouse mAb with DAB staining.



Immunofluorescence analysis of HeLa cells using TWF1 mouse mAb (green). Blue: DRAQ5 fluorescent DNA dye.

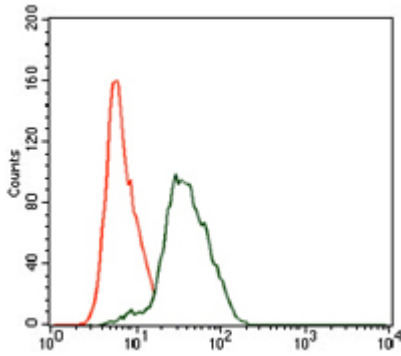


Immunohistochemical analysis of paraffin-embedded ovarian cancer tissues using TWF1 mouse mAb with DAB staining.

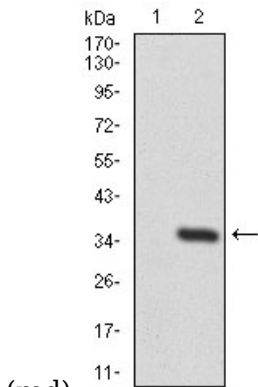
# Anti-TWF1/Twinfilin-1 (5F10) Mouse antibody



Catalog Number: 168319

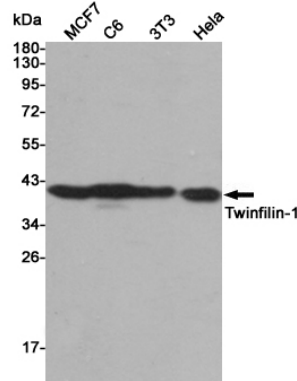


Flow cytometric analysis of HeLa cells using TWF1 mouse mAb (green) and negative control (red).



(red).

Western blot analysis using TWF1 mAb against HEK293 (1) and TWF1 (AA: 335-384)-hIgGFc transfected HEK293 (2) cell lysate.



Western blot detection of Twinfilin-1 in MCF7, C6, 3T3 and HeLa cell lysates using Twinfilin-1 mouse mAb (1:5000 diluted). Predicted band size: 40KDa. Observed band size: 40KDa.