

# Myosin Light Chain 2 antibody



Catalog Number: 107319

## Product name

Myosin Light Chain 2 antibody

WB: 1:500-1:5000

IHC: 1:20-1:200

## Immunogen

[Human MYL2 Recombinant protein \(GST tag\)](#)

## Specificity

Human, Mouse, Rat; other species not tested.

## Antibody description

Myosin Light Chain 2 Mouse Monoclonal antibody. Positive WB detected in Human heart. Positive IHC detected in human heart tissue. Observed molecular weight by Western-blot: 18 kDa

## Preparation

This antibody was obtained by immunization of Myosin Light Chain 2 recombinant protein (Accession Number: NM\_000432). Purification method: Protein G purified.

## Formulation

PBS with 0.02% sodium azide and 50% glycerol pH 7.3.

## Storage

Store at -20°C. DO NOT ALIQUOT

## Clonality

Monoclonal

## Ig Type

Mouse IgG1

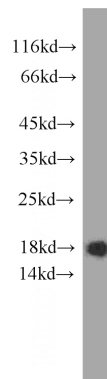
## Applications

ELISA, WB, IHC

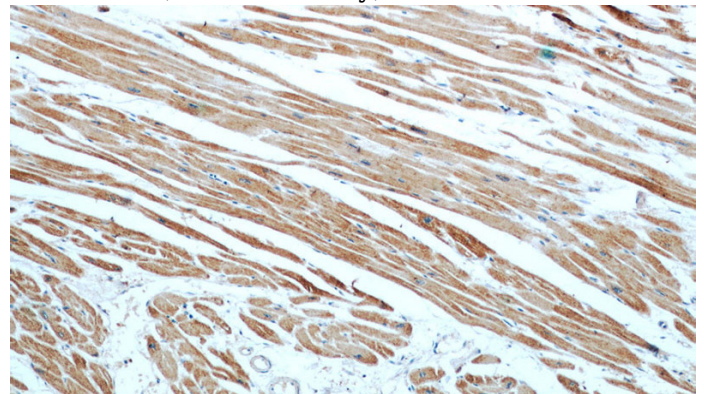
## Dilutions

Recommended Dilution:

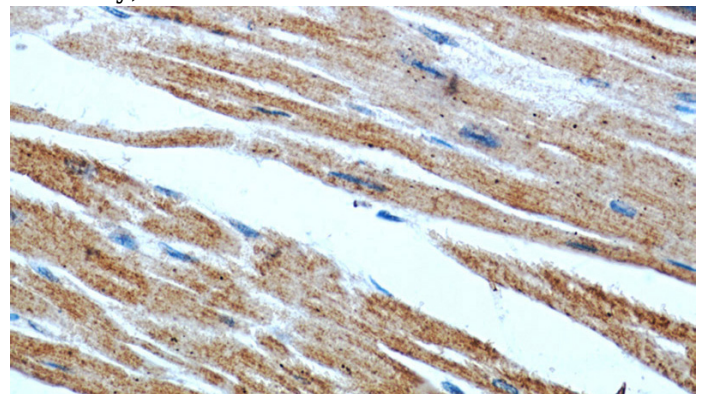
## Validations



human heart tissue were subjected to SDS PAGE followed by western blot with Catalog No:107319(MYL2 antibody) at dilution of 1:1000



Immunohistochemistry of paraffin-embedded human heart slide using Catalog No:107319(MYL2 Antibody) at dilution of 1:50



Immunohistochemistry of paraffin-embedded human heart slide using Catalog No:107319(MYL2

# Myosin Light Chain 2 antibody



Catalog Number: 107319

---

Antibody) at dilution of 1:50