

LRMP antibody

Catalog Number: 112319

Product name

LRMP antibody

Specificity

Human; other species not tested.

Antibody description

LRMP Rabbit Polyclonal antibody. Positive IHC detected in human spleen tissue. Positive IF detected in HepG2 cells. Positive WB detected in Raji cells, Jurkat cells. Observed molecular weight by Western-blot: 70kd

Preparation

This antibody was obtained by immunization of Peptide (Accession Number: NM_006152). Purification method: Antigen affinity purified.

Formulation

PBS with 0.02% sodium azide and 50% glycerol pH 7.3.

Storage

Store at -20°C. DO NOT ALIQUOT

Clonality

Polyclonal

Ig Type

Rabbit IgG

Applications

ELISA, WB, IF, IHC

Dilutions

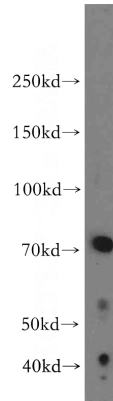
Recommended Dilution:

WB: 1:500-1:5000

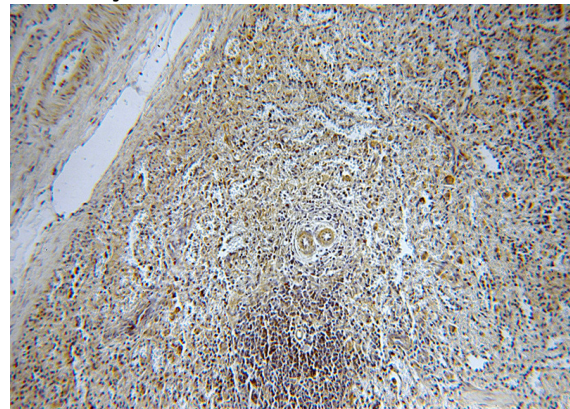
IHC: 1:20-1:200

IF: 1:10-1:100

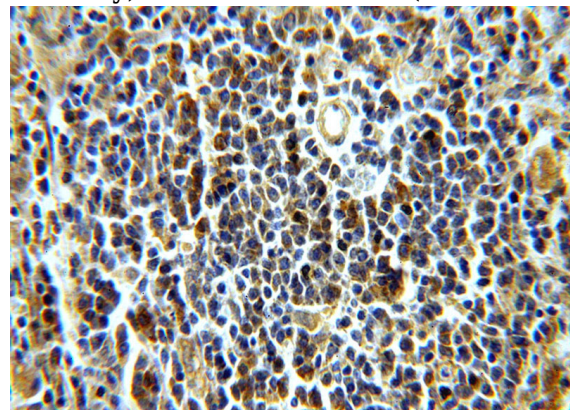
Validations



Raji cells were subjected to SDS PAGE followed by western blot with Catalog No:112319(LRMP antibody) at dilution of 1:500



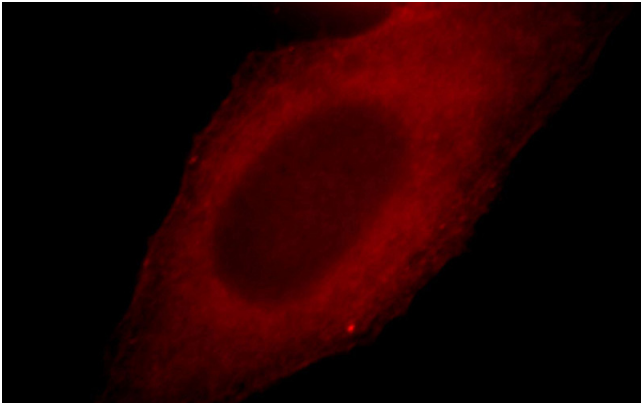
Immunohistochemical of paraffin-embedded human spleen using Catalog No:112319(LRMP antibody) at dilution of 1:100 (under 10x lens)



Immunohistochemical of paraffin-embedded human spleen using Catalog No:112319(LRMP antibody) at dilution of 1:100 (under 40x lens)

LRMP antibody

Catalog Number: 112319



Immunofluorescent analysis of HepG2 cells, using LRMP antibody Catalog No:112319 at 1:25 dilution and Rhodamine-labeled goat anti-rabbit IgG (red).