

Human C6orf25 / G6B (His Tag) recombinant protein



Catalog Number: 500319

General Information

Gene Name Synonym

cDNA FLJ35073 fis, clone PLACE6000630

Protein Construction

A DNA sequence encoding the human G6B (NP_612116.1) (Met1-Gln142) was expressed with a polyhistidine tag at the C-terminus.

Organism

Human

Expression Host

Human Cells

QC Testing

Purity

> (51+44) % as determined by SDS-PAGE.

Endotoxin

< 1.0 EU per μg protein as determined by the LAL method.

Stability

Samples are stable for up to twelve months from date of receipt at -70°C

Predicted N terminal

Asn 18

Molecular Mass

The recombinant human G6B consists 136 amino acids and predicts a molecular mass of 14.9 kDa.

Formulation

Lyophilized from sterile PBS, pH 7.4.

1. 5 % trehalose and mannitol are added as protectants before lyophilization.

2. Please contact us for any concerns or special requirements.

Usage Guide

Storage

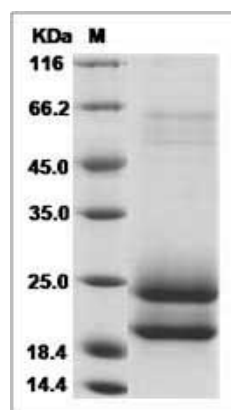
Store it under sterile conditions at -20°C to -80°C .

It is recommended that the protein be aliquoted for optimal storage. Avoid repeated freeze-thaw cycles.

Reconstitution

Adding sterile water, prepare a stock solution of 0.25 mg/ml. Concentration is measured by UV-Vis.

SDS-PAGE



Human C6orf25 / G6B Protein (His Tag)