

Anti-Casein Kinase 1 alpha Rabbit antibody



Catalog Number: 168619

Product name

Anti-Casein Kinase 1 alpha Rabbit antibody

Specificity

Human, Mouse, Rat

Antibody description

Casein Kinase 1 alpha Rabbit monoclonal antibody

Preparation

Antigen: A synthetic peptide of human Casein Kinase 1 alpha

Formulation

50nM Tris-Glycine(pH 7.4), 0.15M NaCl, 40%Glycerol, 0.01% sodium azide and 0.05% BSA.

Storage

Store at 4°C short term. Store at -20°C long term. Avoid freeze / thaw cycle.

Clonality

Monoclonal

Ig Type

Rabbit IgG

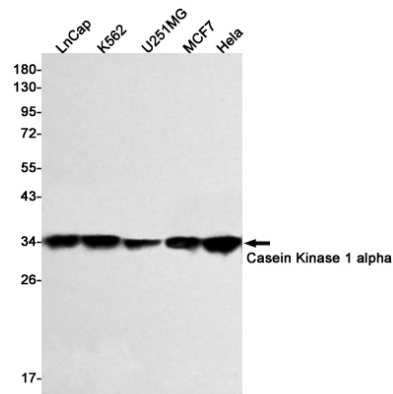
Applications

WB

Dilutions

WB: 1/1000-1/5000

Validations



Western blot detection of Casein Kinase 1 alpha in LnCap, K562, U251MG, MCF7, HeLa cell lysates using Casein Kinase 1 alpha Rabbit mAb(1:500 diluted). Predicted band size: 39kDa. Observed band size: 34kDa.