

TELO2 antibody



Catalog Number: 107619

Product name

TELO2 antibody

WB: 1:1000-1:10000

IP: 1:200-1:2000

Specificity

Human; other species not tested.

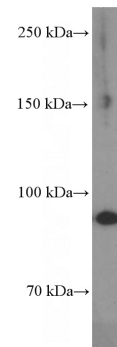
IHC: 1:20-1:200

IF: 1:10-1:100

Antibody description

TELO2 Mouse Monoclonal antibody. Positive IHC detected in human kidney tissue, human liver cancer tissue. Positive IF detected in HepG2 cells. Positive WB detected in Y79 cells, A431 cells, L02 cells. Positive IP detected in HepG2 cells. Observed molecular weight by Western-blot: 92 kDa

Validations



Preparation

This antibody was obtained by immunization of TELO2 recombinant protein (Accession Number: XM_047434987). Purification method: Protein G purified.

Y79 cells were subjected to SDS PAGE followed by western blot with Catalog No:107619(TELO2 Antibody) at dilution of 1:2000

Formulation

PBS with 0.02% sodium azide and 50% glycerol pH 7.3.

Storage

Store at -20°C. DO NOT ALIQUOT

Clonality

Monoclonal

Ig Type

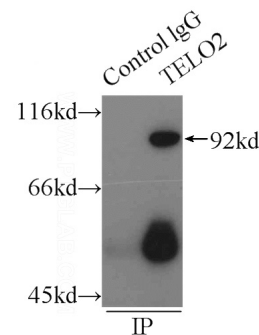
Mouse IgG1

Applications

ELISA, IF, IP, WB, IHC

Dilutions

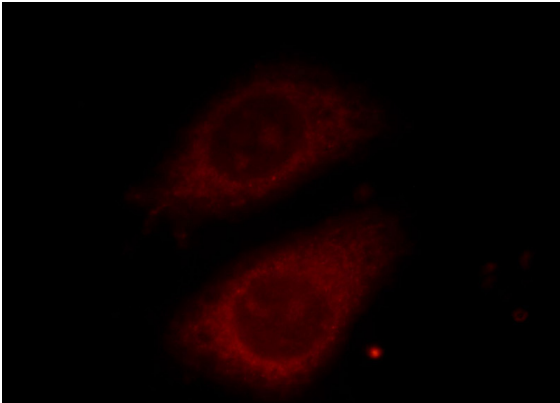
Recommended Dilution:



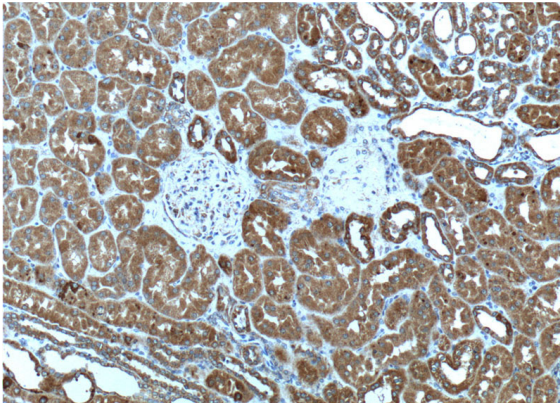
IP Result of anti-TELO2 (IP:Catalog No:107619, 4ug; Detection:Catalog No:107619 1:500) with HepG2 cells lysate 2900ug.

TELO2 antibody

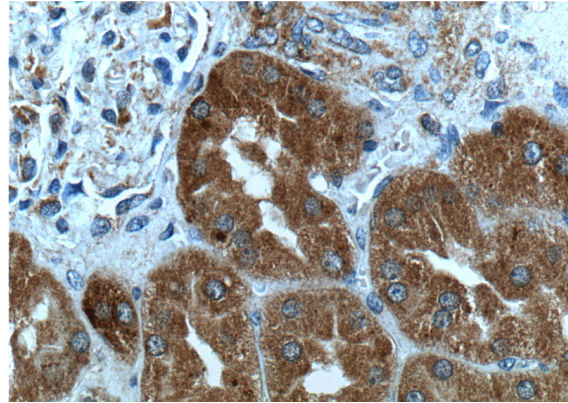
Catalog Number: 107619



Immunofluorescent analysis of HepG2 cells, using TELO2 antibody Catalog No: at 1:25 dilution and Rhodamine-labeled goat anti-mouse IgG (red).



Immunohistochemistry of paraffin-embedded human kidney tissue slide using Catalog No:107619(TELO2 Antibody) at dilution of 1:200 (under 10x lens).



Immunohistochemistry of paraffin-embedded human kidney tissue slide using Catalog No:107619(TELO2 Antibody) at dilution of 1:200 (under 40x lens).