

# Anti-FAB1A antibody



Catalog Number: 176619

## Product name

Anti-FAB1A antibody

## Specificity

Arabidopsis thaliana

## Antibody description

Rabbit polyclonal antibody to FAB1A

## Preparation

This antigen of this antibody was synthetic peptide within arabidopsis thaliana fab1a aa 100-200 / 1757.

## Formulation

Liquid, 1\*TBS (pH7.4), 1%BSA, 50%Glycerol.  
Preservative: 0.05% Sodium Azide.

## Storage

Store at +4°C after thawing. Aliquot store at -20°C. Avoid repeated freeze / thaw cycles.

## Clonality

Polyclonal

## Ig Type

Rabbit IgG

## Applications

IF, IHC-P

## Dilutions

IF:1:50-1:100

IHC-P:1:50-1:200

## Validations

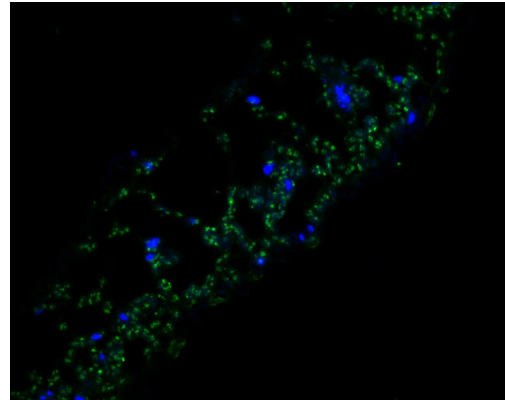
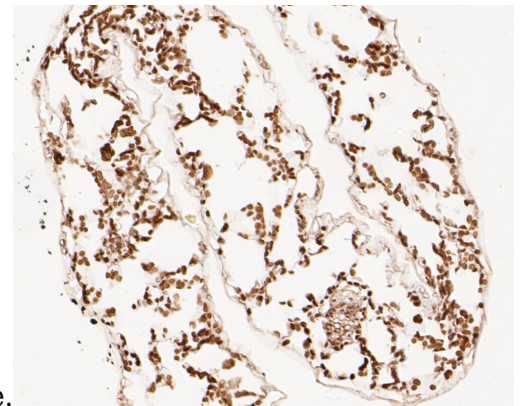


Fig1:: Immunofluorescence staining of paraffin-embedded A. thaliana using anti-FAB1A rabbit polyclonal antibody. The section was pre-treated using heat mediated antigen retrieval with Tris-EDTA buffer (pH 9.0) for 20 minutes. The tissues were blocked in 10% negative goat serum for 1 hour at room temperature, washed with PBS, and then probed with 176619# at 1/100 dilution for 10 hours at 4°C and detected using Alexa Fluor® 488 conjugate-Goat anti-Rabbit IgG (H+L) Secondary Antibody at a dilution of 1:500 for 1 hour at room



temperature.

Fig2:: Immunohistochemical analysis of paraffin-embedded A. thaliana tissue using anti-FAB1A antibody. The section was pre-treated using heat mediated antigen retrieval with Tris-EDTA buffer (pH 9.0) for 20 minutes. The tissues were blocked in 5% BSA for 30 minutes at room temperature, washed with ddH<sub>2</sub>O and PBS, and then probed with the primary antibody (1/50) for 30 minutes at room temperature. The detection was performed using an HRP conjugated compact polymer system. DAB was used as the chromogen. Tissues were counterstained with hematoxylin and mounted with DPX.