

# FHL2 Polyclonal Antibody



Catalog Number: 163619

## Product name

FHL2 Polyclonal Antibody

## Specificity

Human, Mouse, Rat

## Antibody description

Polyclonal antibody to FHL2

## Preparation

Antigen: Recombinant fusion protein containing a sequence corresponding to amino acids 1-279 of human FHL2 (NP\_001034581.1).

## Formulation

PBS with 0.02% sodium azide, 50% glycerol, pH7.3.

## Storage

Store at -20°C. Avoid freeze / thaw cycles.

## Clonality

Polyclonal

## Ig Type

Rabbit IgG

## Applications

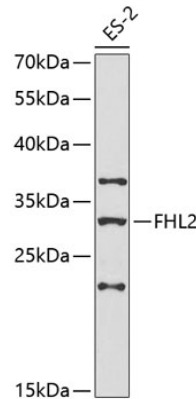
WB, IHC

## Dilutions

WB 1:500 - 1:2000

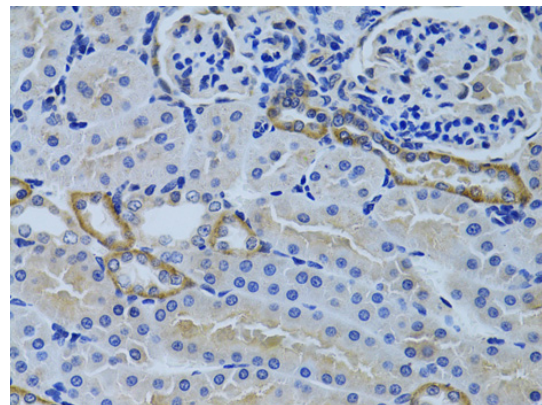
IHC 1:50 - 1:200

## Validations



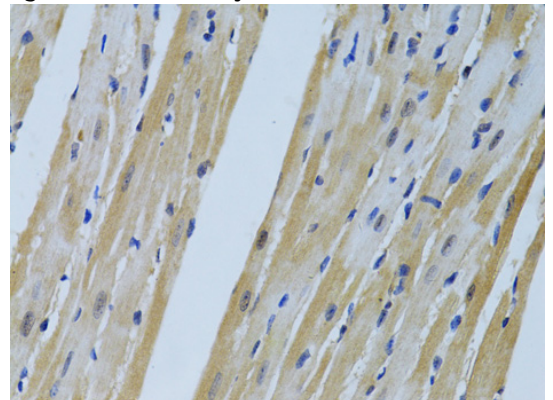
Western blot - FHL2 Polyclonal Antibody

Western blot analysis of extracts of ES-2 cells, using FHL2 antibody at 1:1000 dilution. Secondary antibody: HRP Goat Anti-Rabbit IgG (H+L) at 1:10000 dilution. Lysates/proteins: 25ug per lane. Blocking buffer: 3% nonfat dry milk in TBST. Detection: ECL Enhanced Kit .



Immunohistochemistry - FHL2 Polyclonal Antibody

Immunohistochemistry of paraffin-embedded rat kidney using FHL2 antibody at dilution of 1:100



(40x lens).

Immunohistochemistry - FHL2 Polyclonal Antibody

# FHL2 Polyclonal Antibody



Catalog Number: 163619

---

Immunohistochemistry of paraffin-embedded

mouse heart using FHL2 antibody at dilution of 1:100 (40x lens).