

Human LAP3 (His Tag) recombinant protein



Catalog Number: 500619

General Information

Gene Name Synonym

Leucine aminopeptidase 3; Leucyl aminopeptidase; Peptidase S; Proline aminopeptidase; Prolyl aminopeptidase

Protein Construction

A DNA sequence encoding the human LAP3 (NP_056991.2) (Met1-Ala519) was expressed with a polyhistidine tag at the C-terminus.

Organism

Human

Expression Host

Human Cells

QC Testing

Purity

> 90 % as determined by SDS-PAGE.

Endotoxin

< 1.0 EU per μg protein as determined by the LAL method.

Stability

Samples are stable for up to twelve months from date of receipt at -70°C

Predicted N terminal

Met

Molecular Mass

The recombinant human LAP3 consists 530 amino acids and predicts a molecular mass of 57.6 kDa.

Formulation

Lyophilized from sterile 20 mM Tris, 500 mM NaCl, 20 % glycerol, pH 7.4.

1. 5 % trehalose and mannitol are added as protectants before lyophilization.
2. Please contact us for any concerns or special requirements.

Usage Guide

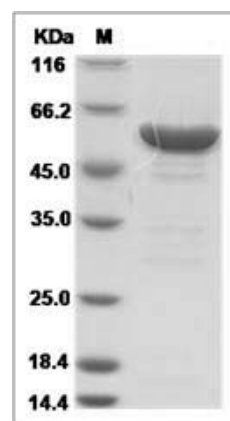
Storage

Store it under sterile conditions at -20°C to -80°C . It is recommended that the protein be aliquoted for optimal storage. Avoid repeated freeze-thaw cycles.

Reconstitution

Adding sterile water, prepare a stock solution of 0.25 mg/ml. Concentration is measured by UV-Vis.

SDS-PAGE



Human LAP3 Protein (His Tag)