

Anti-NSE (1H8) Mouse antibody



Catalog Number: 168219

Product name

Anti-NSE (1H8) Mouse antibody

Specificity

Human, Mouse, Rat

Antibody description

NSE (1H8) Mouse monoclonal antibody

Preparation

Antigen: Synthetic peptide derived from human NSE.

Formulation

Purified mouse monoclonal antibody in PBS(pH 7.4) containing with 0.03% Proclin300.

Storage

Store at 4°C short term. Avoid freeze / thaw cycle.

Clonality

Monoclonal

Ig Type

Mouse IgG1

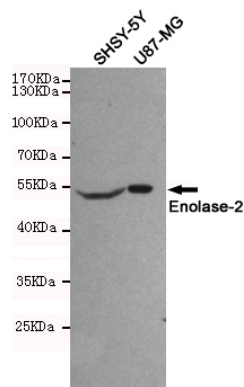
Applications

ELISA, WB

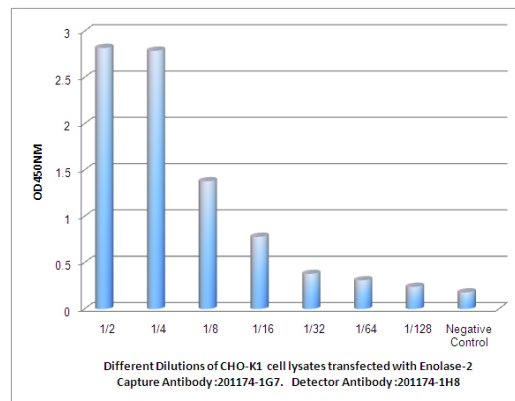
Dilutions

WB: 1/500

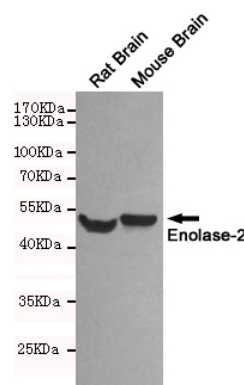
Validations



Western blot detection of Enolase-2 in SHSY-5Y and U87-MG cell lysates using Enolase-2 mouse mAb (1:500 diluted). Predicted band size: 47 kDa. Observed band size: 47 kDa.



Observed Enolase-2 levels in CHO-K1 cell lysates transfected with Enolase-2 at different dilution.



Western blot detection of Enolase-2 in Rat Brain and Mouse Brain lysates using Enolase-2 mouse mAb (1:500 diluted). Predicted band size: 47 kDa. Observed band size: 47 kDa.